

Addendum No. 1
February 22,2021

Project: Lincoln High School – C.I.P. Addition and Renovations PD#3311
Sioux Falls, South Dakota

Architecture Incorporated Project No.: 2901

Architect: Architecture Incorporated

Letting: **Thursday, March 4, 2021**
2:00 p.m. (prevailing local time)
Central Services Center
1101 N. Western Avenue
Sioux Falls, South Dakota

Scope of this Addendum:

To all bidders and all others to whom drawings and specifications have been issued by Architecture Incorporated, this Addendum forms a part of the Contract Documents. Acknowledge receipt of this addendum by listing its number and date in the bidder's Form of Proposal. Failure to do so may subject bidder to disqualification. This addendum modifies the drawings and specifications as follows:

GENERAL ITEMS:

- 1) SECTION 011000 - SUMMARY OF WORK
 - a) CLARIFICATION: As specified per Article 1.4.B.1.a., construction work inside the school building shall not commence until the current academic school year has been completed. The last day of school is May 25th, 2021.
 - b) CLARIFICATION: As specified per Article 1.4.B.1.b., neither the replacement of existing, exterior metal wall panels nor the replacement of existing, exterior aluminum windows shall commence until the current academic school year has been completed. The last day of school is May 25th, 2021.
- 2) SECTION 013300 – SUBMITTAL PROCEDURES
 - a) CLARIFICATION: As specified per Article 1.2.A.1., the successful Contractor shall be responsible for providing an electronic submittal service for use throughout the Project under his Base Bid.
- 3) SECTION 122113 - HORIZONTAL WINDOW BLINDS
 - a) Add attached specification Section 122113 – HORIZONTAL LOUVER BLINDS.
 - b) Provide horizontal louver window blinds in classrooms: E201, E202, E208, E209, E210, E211, E212, E213, E211G (Auto Tech. – see below for room # change), E211E, E211C, E228B, E230 and E241.

- 4) SHEET 2.21 – ENLARGED SITE DEMOLITION PLAN
- a) There are two trees on the east side of the building noted ‘REMOVE TREES’. These trees are to be relocated on site to a location to be determined by the owner.
- 5) SHEET 4.10 – FIRST FLOOR PLAN – AREA D
- a) Locker Room D138 – Existing athletic lockers should remain in place until new lockers have been shipped.
- 6) SHEET 4.12 – SECOND FLOOR PLAN – AREA E
- a) Change ‘*Auto Tech*’ room number from ‘E211’ to ‘E211G’.
- b) See attached supplemental drawing SD-2 (detail 7/5.21) for replacement of the concrete stoop slab, insulation, and EPDM membrane at existing north entrance door. Contractor to remove concrete slab, waterproofing membrane, and rigid insulation to allow for installation of new. Existing structural slab to remain.
- c) Classroom E212 – Omit wall type reference A1 from entire north wall and partial west wall adjacent to cabinets. These were furred out under a previous project.
- d) Clarification regarding furring out exterior walls: carpet is to be trimmed back to allow for installation of new 6” stud furring (it is NOT acceptable to place studs on top of carpet). Provide new resilient base at furred out walls as scheduled.
- 7) SHEET 4.20 – ENLARGED PLANS
- a) Provide 1’-6” x 3’-0” framed mirrors above all new lavatories in restrooms Men E108B and Women E108A.
- i) Reference 1/4.20 - *Enlarged Restroom Plan* and Item ‘J’ on the Accessory Schedule.
- 8) SHEET 5.11 – WINDOW DETAILS
- a) At window details 2/5.11 and 3/5.11 (head details A/5.11 at each), provide a two-piece prefinished metal roof edge to accommodate additional fascia height when insulation was added under a previous re-roofing project.
- i) Reference supplemental drawing SD-3 attached to the end of this addendum for revised detail 5/5.20 for two-piece roof edge profile.
- 9) SHEET 5.21 – SECTION DETAILS
- a) Detail 3/5.21 – at ‘14’-0” TOM’ elevation reference, change the ‘~~12’-0”~~ ABOVE THE FLOOR’ to read ‘11’-4” ABOVE THE FLOOR’.
- b) Reference supplemental drawing SD-1 attached to the end of this addendum for revised detail 1/5.21.
- c) Reference supplemental drawing SD-2 attached to the end of this addendum for stoop slab detail 7/5.21; see detail that is keyed in at north end of corridor E207; reference floor plan Sheet 4.12.

- d) Reference supplemental drawing SD-3 attached to the end of this addendum for revised detail 5/5.20 which identifies a revised pre-finished metal roof edge detail.
 - i) Provide a two-piece pre-finished metal roof edge to accommodate ‘*modified*’ fascia height.
 - (1) NOTE: Additional fascia height occurred when additional thickness(es) of rigid insulation was added to the roof assembly during a previous re-roofing project.

10) SHEET 5.30 – ROOF PLAN

- a) Omit detail reference 6/5.21 shown on the roof plan at new addition (2 locations). This detail is not used.
- b) Omit detail reference 7/5.21 shown at north wall of roof plan.

MECHANICAL ITEMS:

N.A.

ELECTRICAL ITEMS:

1) SECTION 265110 – INTERIOR LIGHTING

- a) The electrical contractor and supplier(s) of luminaires shall work with the Owner and electrical utility to obtain available rebates for lighting systems. Work shall include providing all required documentation and completing rebate application forms for the owner to receive available rebates.

2) SECTION 265210 – EXTERIOR LIGHTING

- a) The electrical contractor and supplier(s) of luminaires shall work with the owner and electrical utility to obtain available rebates for lighting systems. Work shall include providing all required documentation and completing rebate application forms for the owner to receive available rebates.

3) SHEET 9.11 – ORIENTATION PLAN-ELECTRICAL

- a) Remove / re-install any existing exterior cameras as required to accommodate building siding replacement.

4) SHEET 9.20 – FIRST FLOOR PLAN – AREA “D” – DEMOLITION

- a) View title to be “FIRST FLOOR PLAN – AREA “D” – DEMOLITION – ELECTRICAL.

5) SHEET 9.30 – FIRST FLOOR PLAN – AREA “D” – LIGHTING

- a) View title to be “FIRST FLOOR PLAN – AREA “D” – LIGHTING.

6) SHEET 9.31 – FIRST FLOOR PLAN – AREA “D” - POWER

- a) In reference to the re-installed intercom speaker. Speaker to be new in lieu of relocated.

7) SHEET 9.32 – FIRST FLOOR PLAN – AREA “E” – LIGHTING

a) View title to be “FIRST FLOOR PLAN – AREA “E” – LIGHTING.

8) SHEET 9.40 – ELECTRICAL SYMBOLS AND ABBREVIATIONS

a) Lighting Fixture Schedule Clarifications Modifications:

- i) Type “A” through “D” and “G” through “H” shall have 3500 degree K color temperature in lieu of 4000 degree K.
- ii) Change type “A3” and “A3E” luminaires to type “A2” and “A2E”.
- iii) Type “C” to be equal to Day-Brite #1-SML-42L-835-4-FA-12F-UNV-DIM.
- iv) Change type “E3” luminaire to type “E2”.
- v) Type “Y” to be equal to NLS CAT#NV-W-T3-16L-1-40K-UNV-WM-BRZ.
- vi) Type “Y1” to be the same as type “Y” except approximately 3200 lumens.

GENERAL APPROVALS:

The following material or equipment furnished by the manufacturers listed, may be substituted as equivalent providing that each item, material, and piece of equipment conforms to the design and requirement of the specifications.

<u>SECTION</u>	<u>ITEM</u>	<u>MANUFACTURER</u>
265110/265210	Interior/Exterior Lighting	
	Types A, AE, A1, A2, A2E	METALUX, LITHONIA
	Types E, E1, E2	SURE-LITES, EMERGILITE, EMER
	Type H	BETA-CALCO
261450	Lighting Control Devices	
	Occupancy Sensors and Controls	SENSOR SWITCH

END OF ADDENDUM No. 1

SECTION 122113 - HORIZONTAL LOUVER BLINDS

PART 1 - GENERAL

1.1 RELATED DOCUMENTS

- A. Drawings and general provisions of the Contract, including General and Supplementary Conditions and Division 01 Specification Sections, apply to this Section.

1.2 SUMMARY

- A. Section Includes:

- 1. Horizontal louver blinds with aluminum slats.

- B. Related Requirements:

- 1. Section 061053 "Miscellaneous Rough Carpentry" for wood blocking and grounds for mounting horizontal louver blinds and accessories.

1.3 ACTION SUBMITTALS

- A. Samples: For each exposed product and for each color and texture specified, 12 inches (300 mm) long.

1.4 CLOSEOUT SUBMITTALS

- A. Maintenance Data: For horizontal louver blinds to include in maintenance manuals.

1.5 MAINTENANCE MATERIAL SUBMITTALS

- A. Furnish extra material that match products installed and that are packaged with protective covering for storage and identified with labels describing contents.

- 1. Horizontal Louver Blinds: Full-size units equal to 5 percent of quantity installed for each size, color, texture, pattern, and gloss indicated, but no fewer than two units.

1.6 DELIVERY, STORAGE, AND HANDLING

- A. Deliver horizontal louver blinds in factory packages, marked with manufacturer, product name, and location of installation using same designations indicated on Drawings.

1.7 FIELD CONDITIONS

- A. Environmental Limitations: Do not install horizontal louver blinds until construction and wet and finish work in spaces, including painting, is complete and dry and ambient temperature and

humidity conditions are maintained at the levels indicated for Project when occupied for its intended use.

- B. Field Measurements: Where horizontal louver blinds are indicated to fit to other construction, verify dimensions of other construction by field measurements before fabrication and indicate measurements on Shop Drawings. Allow clearances for operating hardware of operable glazed units through entire operating range. Notify Architect of installation conditions that vary from Drawings. Coordinate fabrication schedule with construction progress to avoid delaying the Work.

PART 2 - PRODUCTS

2.1 MANUFACTURERS

- A. Source Limitations: Obtain horizontal louver blinds from single source from single manufacturer.

2.2 HORIZONTAL LOUVER BLINDS, ALUMINUM SLATS (WT-1)

- A. Manufacturers: Subject to compliance with requirements, available manufacturers offering products that may be incorporated into the Work include, but are not limited to, the following:
 1. Hunter Douglas
 2. Levolor Contract
 3. Springs Window Fashions
 4. Other – only as approved by Architect in writing prior to bid letting.
- B. Slats: Aluminum; alloy and temper recommended by producer for type of use and finish indicated; with crowned profile and radius corners.
 1. Width: **1 inch (25 mm)**. Mini Horizontal aluminum blinds
 2. Thickness: Not less than **0.006 inch (0.15 mm)**.
 3. Spacing: Manufacturer's standard.
 4. Finish: Ionized antistatic, dust-repellent, baked polyester finish and Reflective finish on outside-facing surface of slat to enhance reflection of solar energy.
 5. Features:
 - a. Lift-Cord Rout Holes: Minimum size required for lift cord and located near back (outside) edge of slat to maximized slat overlap and minimize light gaps between slats.
- C. Headrail: Formed steel or extruded aluminum; long edges returned or rolled. Headrails fully enclose operating mechanisms on three sides.
 1. Capacity: One blind per headrail unless otherwise indicated.
 2. Ends: Manufacturer's standard.
 3. Manual Lift Mechanism:
 - a. Lift-Cord Lock: Variable; stops lift cord at user-selected position within blind full operating range.

- b. Operator: Extension of lift cord(s) through lift-cord lock mechanism to form cord pull.
 - 4. Manual Tilt Mechanism: Enclosed worm-gear mechanism and linkage rod that adjusts ladders.
 - a. Tilt: Full.
 - b. Operator: Clear-plastic wand.
 - 5. Manual Lift-Operator and Tilt-Operator Lengths: Full length of blind when blind is fully closed
 - 6. Manual Lift-Operator and Tilt-Operator Locations: Right side and left side of headrail, respectively unless otherwise indicated.
- D. Bottom Rail: Formed-steel or extruded-aluminum tube that secures and protects ends of ladders and lift cords and has plastic- or metal-capped ends.
 - 1. Type: Bottom contoured to minimize light gaps.
- E. Lift Cords: Manufacturer's standard braided cord.
- F. Ladders: Evenly spaced across headrail at spacing that prevents long-term slat sag.
 - 1. Type: Braided cord
- G. Valance: Manufacturer's standard.
- H. Mounting Brackets: With spacers and shims required for blind placement and alignment indicated.
 - 1. Type: End
 - 2. Intermediate Support: Provide intermediate support brackets to produce support spacing recommended by blind manufacturer for weight and size of blind.
- I. Colors, Textures, Patterns, and Gloss:
 - 1. Slats: TBD
 - 2. Components: Provide rails, cords, ladders, and materials exposed to view matching or coordinating with slat color unless otherwise indicated.

2.3 HORIZONTAL LOUVER BLIND FABRICATION

- A. Product Safety Standard: Fabricate horizontal louver blinds to comply with WCMA A 100.1 including requirements for corded, flexible, looped devices; lead content of components; and warning labels.
- B. Unit Sizes: Fabricate units in sizes to fill window and other openings as follows, measured at **74 deg F (23 deg C)**:

1. Between (Inside) Jamb Installation: Width equal to jamb-to-jamb dimension of opening in which blind is installed less **1/4 inch (6 mm)** per side or **1/2 inch (13 mm)** total, plus or minus **1/8 inch (3.1 mm)**. Length equal to head-to-sill dimension of opening in which blind is installed less **1/4 inch (6 mm)**, plus or minus **1/8 inch (3.1 mm)**.
- C. Concealed Components: Noncorrodible or corrosion-resistant-coated materials.
 1. Lift-and-Tilt Mechanisms: With permanently lubricated moving parts.
- D. Mounting and Intermediate Brackets: Designed for removal and reinstallation of blind without damaging blind and adjacent surfaces, for supporting blind components, and for bracket positions and blind placement indicated.
- E. Installation Fasteners: No fewer than two fasteners per bracket, fabricated from metal noncorrosive to brackets and adjoining construction; type designed for securing to supporting substrate; and supporting blinds and accessories under conditions of normal use.
- F. Color-Coated Finish:
 1. Metal: For components exposed to view, apply manufacturer's standard baked finish complying with manufacturer's written instructions for surface preparation including pretreatment, application, baking, and minimum dry film thickness.

PART 3 - EXECUTION

3.1 EXAMINATION

- A. Examine substrates, areas, and conditions, with Installer present, for compliance with requirements for installation tolerances, operational clearances, locations of connections to building electrical system, and other conditions affecting performance.
 1. Proceed with installation only after unsatisfactory conditions have been corrected.

3.2 INSTALLATION

- A. Install horizontal louver blinds level and plumb, aligned and centered on openings, and aligned with adjacent units according to manufacturer's written instructions.
 1. Locate so exterior slat edges are not closer than **1 inch (25 mm)** from interior faces of glass and not closer than **1-1/2 inches (38 mm)** from interior faces of glazing frames through full operating ranges of blinds.
 2. Install mounting and intermediate brackets to prevent deflection of headrails.
 3. Install with clearances that prevent interference with adjacent blinds, adjacent construction, and operating hardware of glazed openings, other window treatments, and similar building components and furnishings.

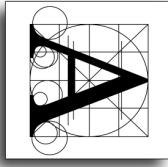
3.3 ADJUSTING

- A. Adjust horizontal louver blinds to operate free of binding or malfunction through full operating ranges.

3.4 CLEANING AND PROTECTION

- A. Clean horizontal louver blind surfaces after installation according to manufacturer's written instructions.
- B. Provide final protection and maintain conditions in a manner acceptable to manufacturer and Installer and that ensures that horizontal louver blinds are without damage or deterioration at time of Substantial Completion.
- C. Replace damaged horizontal louver blinds that cannot be repaired in a manner approved by Architect before time of Substantial Completion.

END OF SECTION 122113

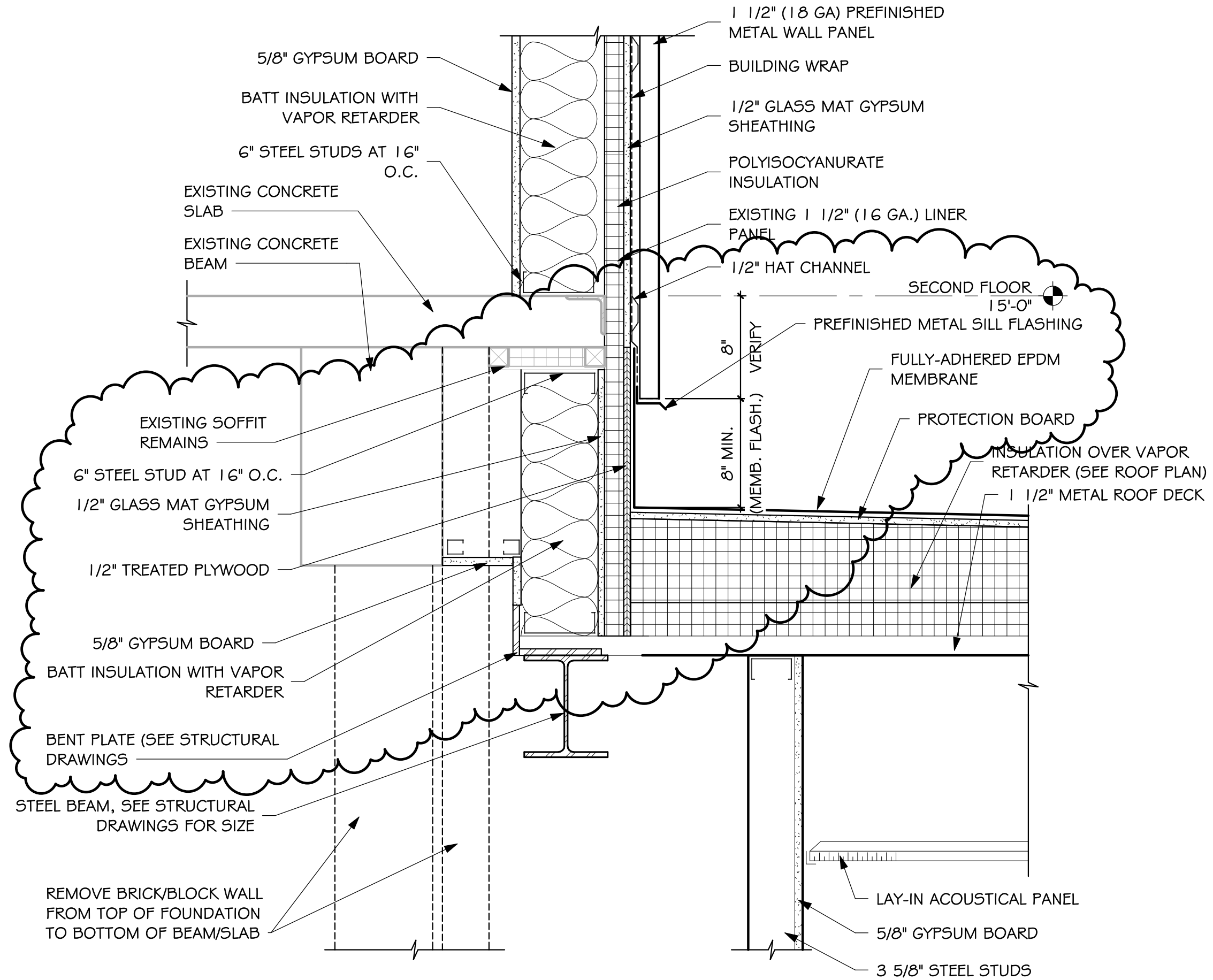


project LINCOLN HIGH SCHOOL - C.I.P. ADDITION AND RENOVATIONS PD #3311
number 0922.2901.20
date FEBRUARY 22, 2021

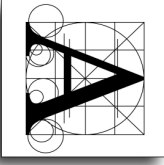
drawn PEM
checked PEM
revision

Architecture Incorporated
sioux falls and rapid city, south dakota

DRAWING
SD1



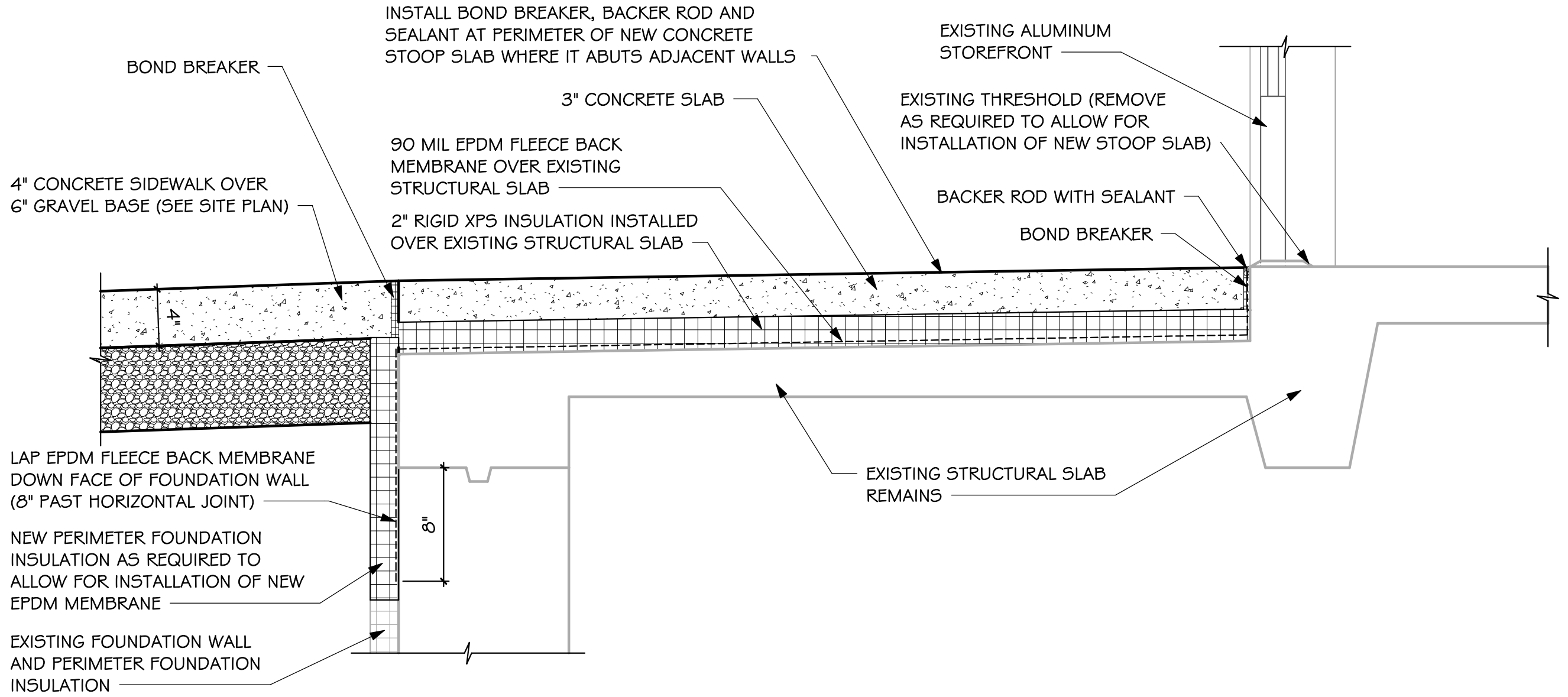
1
5.21
DETAIL
SCALE: 1 1/2" = 1'-0"



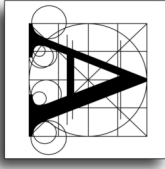
project LINCOLN HIGH SCHOOL - C.I.P. ADDITION AND RENOVATIONS PD #3311
number 0922.2901.20
date FEBRUARY 22, 2021
drawn PEM
checked PEM
revision

Architecture Incorporated
sioux falls and rapid city, south dakota

DRAWING
SD2



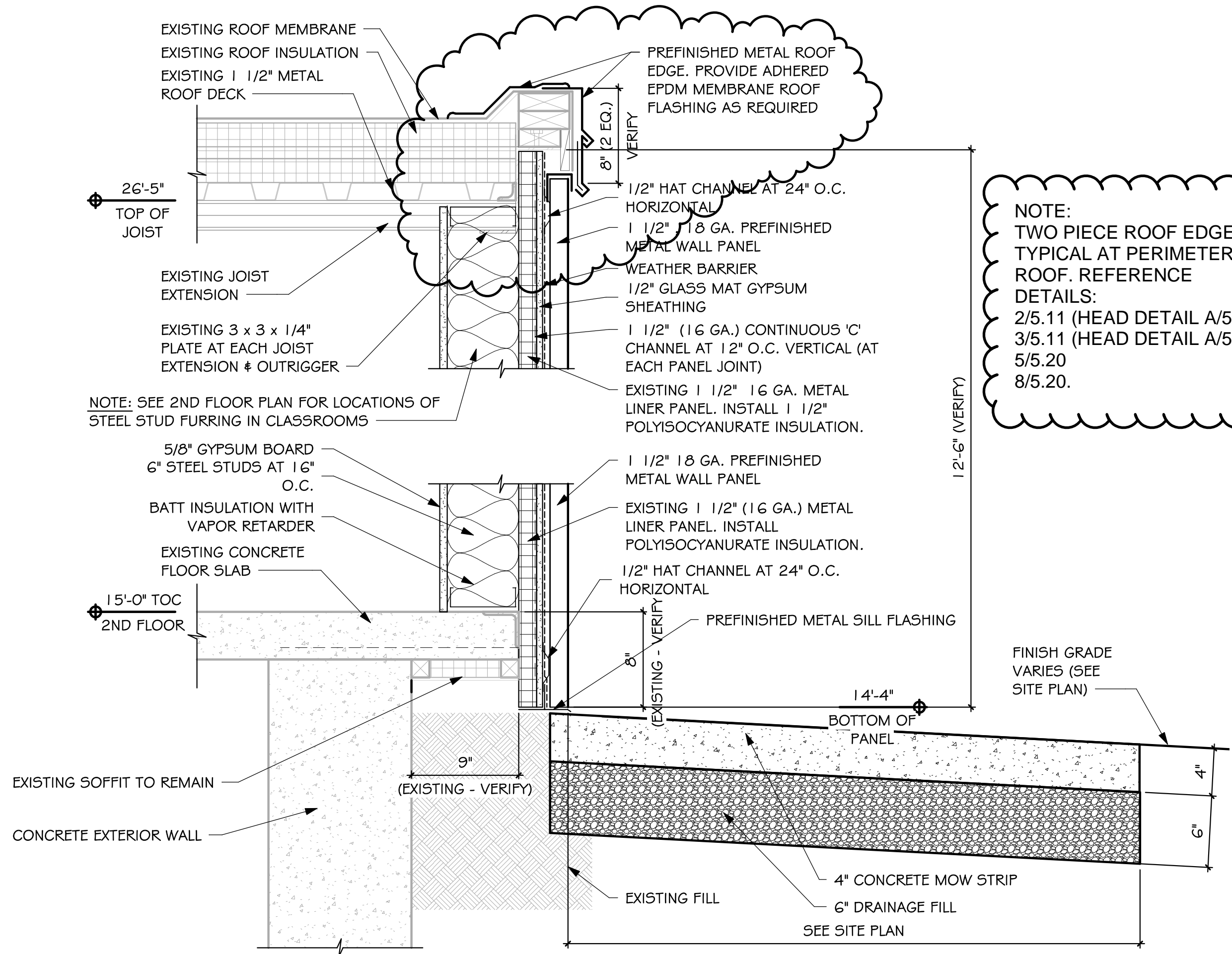
7 STOOP SLAB DETAIL
5.21 SCALE: 1 1/2" = 1'-0"



project LINCOLN HIGH SCHOOL - C.I.P. ADDITION AND RENOVATIONS PD #3311
 number 0922.2901.20
 date FEBRUARY 22, 2021
 drawn PEM
 checked PEM
 revision

Architecture Incorporated
 sioux falls and rapid city, south dakota

DRAWING
 SD3



NOTE:
 TWO PIECE ROOF EDGE IS
 TYPICAL AT PERIMETER OF
 ROOF. REFERENCE
 DETAILS:
 2/5.11 (HEAD DETAIL A/5.11)
 3/5.11 (HEAD DETAIL A/5.11)
 5/5.20
 8/5.20.

EXTERIOR WALL PANEL - NEW CONSTRUCTION