

Addendum No. 2
October 27, 2015

Project: Our Redeemer Lutheran Church Addition
Sioux Falls, South Dakota
Project No. 2513

Architect: Architecture Incorporated

Letting: Wednesday, November 2, 2016
3:00 PM
Our Redeemer Lutheran Church
2200 S. Western Ave
Sioux Falls, SD 57105

Scope of this Addendum:

To all bidders and all others to whom drawings and specifications have been issued by Architecture Incorporated.

Acknowledge receipt of this addendum by listing its number and date in the bidders Form of Proposal. Failure to do so may subject bidder to disqualification. This Addendum forms a part of the Contract Documents. It modifies them as follows:

ARCHITECTURAL SPECIFICATIONS

- 1) SPECIFICATION DIVISION 011000 SUMMARY
 - a. Page 1, 1.3.B. Change to the following: The Contractor shall pay for the building permit as required by the City of Sioux Falls. The Owner has paid for the plan review fee.
- 2) SPECIFICATION DIVISION 123661 SIMULATED STONE COUNTERTOPS
 - a. Specification section for window sills, see the attached Specification Section 123661.

ARCHITECTURAL ITEMS:

DRAWING ITEMS:

- 1) DRAWING SHEET 2.12 – LANDSCAPE PLAN
 - a. General Notes
 - i. General Note “B” should read “Trees to be provided and installed by General Contractor, all other landscaping to be by owner.
 - ii. General Note “C” should read “General Contractor is to provide and install 6” black dirt finish grading and grass seeding at all disturbed areas.”

PRODUCT APPROVALS:

1) Substitutions and Product Approvals:

The following material or equipment furnished by the manufacturer's listed, may be substituted as equal providing that each item, material, and piece of equipment conforms to the design and requirement of the drawings and project manual.

<u>SECTION</u>	<u>ITEM</u>	<u>MANUFACTURER</u>
102113	Toilet Compartments	Metpar Corp. Toilet Compartments

CIVIL ITEMS:

- 1) Sheet C2.21, the grading along the south side of the retaining wall shall be revised as per the attached exhibit.
- 2) Sheet C2.21, the Contractor shall fill the void between the 12” storm sewer and the retaining wall units with concrete where indicated on the attached exhibit.
- 3) Sheet C2.20, the Contractor shall provide a Concrete Washout Facility as per the attached detail within the proposed work limits but not located within a drainage path.

MECHANICAL ITEMS:

DRAWING ITEMS:

1) DRAWING SHEET 8.20 – SITE PLAN - PLUMBING

- a. Remove & replace approximately 80 feet of 4 inch sanitary sewer piping (extending from the existing building to the west) in lieu of extending to the street main as shown.

ELECTRICAL ITEMS:

Substitutions and Product Approvals:

The following material or equipment furnished by the manufacturer's listed, may be substituted as equal providing that each item, material, and piece of equipment conforms to the design and requirement of the drawings and project manual.

SECTION	ITEM	MANUFACTURER
265110	Interior Lighting Type A, AE, AF, AFE Type D, DE Type H	Metalux, Williams Elite, Metalux Elite, Halo
265210	Exterior Lighting Type AA	McGraw Edison, Williams

END OF ADDENDUM

SECTION 123661 - SIMULATED STONE COUNTERTOPS

PART 1 - GENERAL

1.1 RELATED DOCUMENTS

- A. Drawings and general provisions of the Contract, including General and Supplementary Conditions and Division 01 Specification Sections, apply to this Section.

1.2 SUMMARY

- A. Section Includes:
 - 1. Solid-surface-material window sills.

1.3 ACTION SUBMITTALS

- A. Product Data: For window sills.
- B. Samples for Verification: For the following products:
 - 1. Countertop material, 2 inches square.

1.4 CLOSEOUT SUBMITTALS

- A. Maintenance Data: For each type of solid surface to include in maintenance manuals.

1.5 PROJECT CONDITIONS

- A. Field Measurements: Verify dimensions of countertops by field measurements after base cabinets are installed but before countertop fabrication is complete.

1.6 COORDINATION

- A. Coordinate locations of utilities that will penetrate countertops or backsplashes.

PART 2 - PRODUCTS

2.1 SOLID-SURFACE-MATERIAL COUNTERTOPS: SS

- 1. Manufacturers: Provide products by one of the following:

SIMULATED STONE
COUNTERTOPS

123661

- a. FORMICA
 - b. WILSONART
 - c. CORIAN
 - d. LG
 - e. HANNEX
 - f. HI-MAC
 - g. AVONITE
 - h. LIVINGSTONE
- B. Solid Surface Sills: 3/4" thick solid surfacing material with front edges built up with same material.
- C. Solid Surface Material: Homogeneous solid sheets of filled plastic resin complying with ANSI SS1.
1. Type: Provide Standard Type unless Special Purpose Type is indicated.
 2. Colors and Patterns: **As selected by Architect from manufacturer's full range of color selected from group D or less.**

PART 3 - EXECUTION

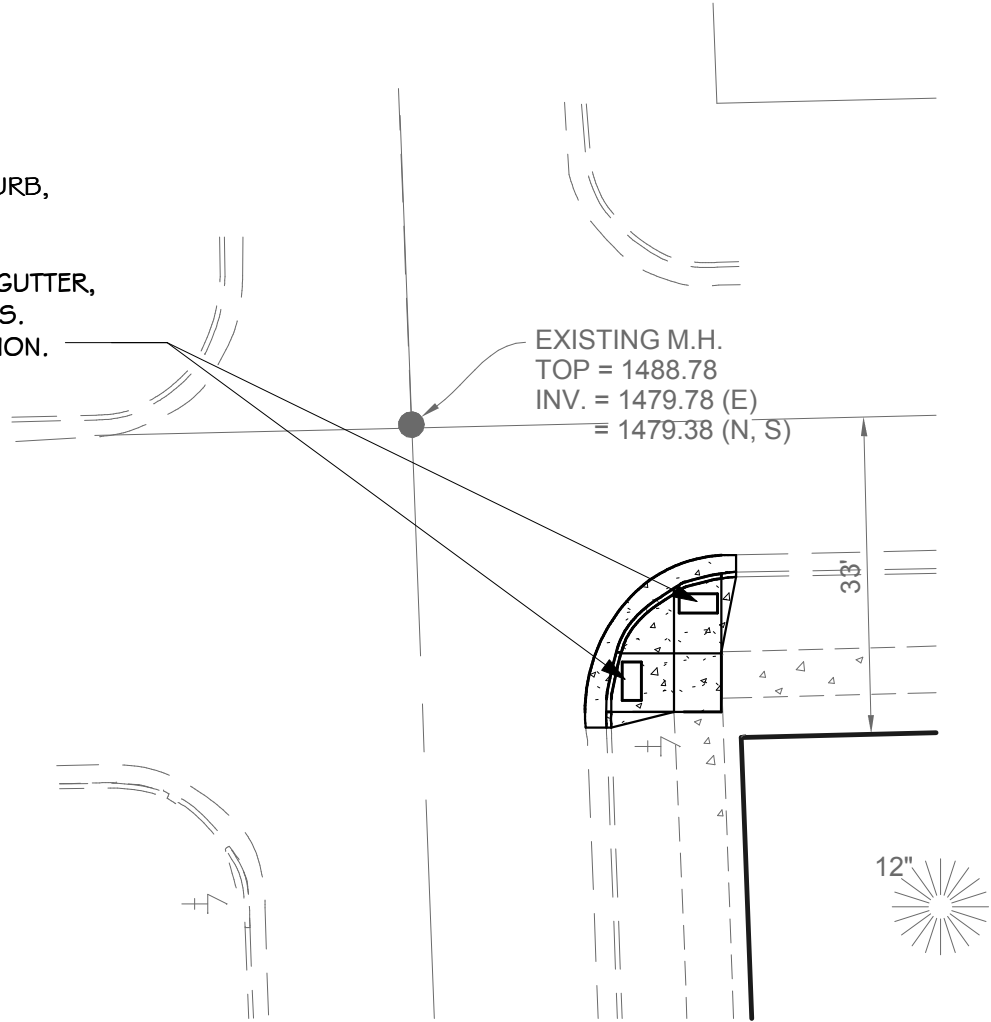
3.1 INSTALLATION

- A. Install countertops level to a tolerance of 1/8 inch in 8 feet (3 mm in 2.4 m).
- B. Fasten countertops by screwing through corner blocks of base units into underside of countertop. Pre-drill holes for screws as recommended by manufacturer. Align adjacent surfaces and, using adhesive in color to match countertop, form seams to comply with manufacturer's written instructions. Carefully dress joints smooth, remove surface scratches, and clean entire surface.
1. Install window sills to comply with manufacturer's written instructions for adhesives, sealers, fabrication, and finishing.
 2. Seal edges of cutouts in particleboard subtops by saturating with varnish.
 3. Use clear caulk by wet areas.

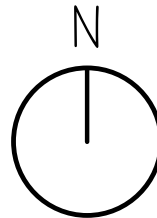
END OF SECTION 123661

REMOVE EXISTING CONCRETE CURB,
GUTTER AND SIDEWALK.

INSTALL NEW CONCRETE CURB, GUTTER,
SIDEWALK AND ADA DIMPLE PADS.
SEE SD-8 FOR MORE INFORMATION.



SD-7 SD-7 SCALE: 1" = 20'-0"

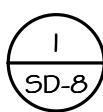
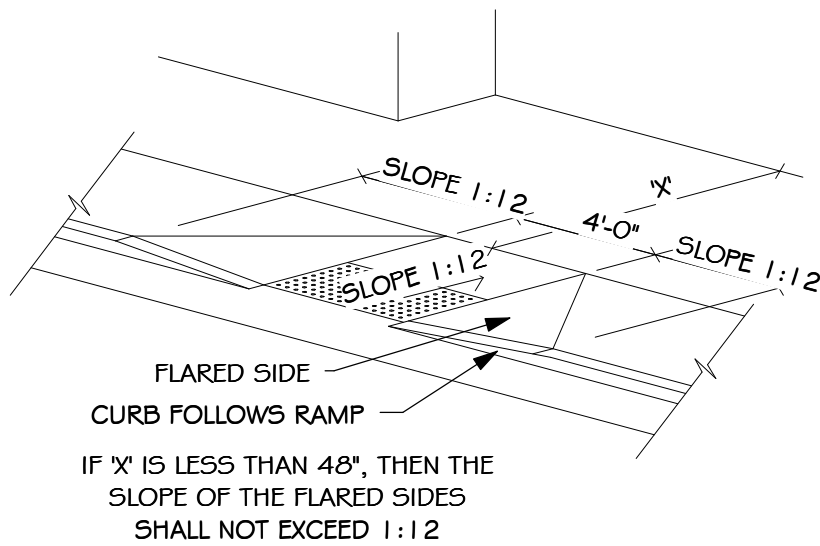


project OUR REDEEMER LUTH. CHURCH ADD.
 number 0805.2513.13 drawn RAG checked SRJ
 date 10/27/16 revision _____

Architecture Incorporated
 sioux falls and rapid city, south dakota

DRAWING

SD-7



CURB RAMP W/PANEL

SD-8 SCALE: 3/4" = 1'-0"



project OUR REDEEMER LUTH. CHURCH ADD.

number 0805.2513.13 drawn RAG checked SRJ

date 10/27/16 revision _____

Architecture Incorporated
sioux falls and rapid city, south dakota

DRAWING

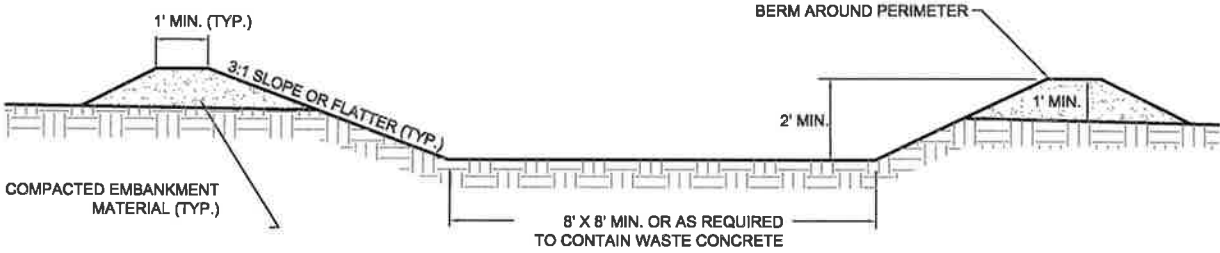
SD-8

CONCRETE WASHOUT FACILITY



NOTES:

- 1. CONCRETE WASHOUT FACILITY SHALL BE INSTALLED PRIOR TO ANY CONCRETE PLACEMENT ON SITE.
- 2. A SIGN SHALL BE INSTALLED ADJACENT TO EACH WASHOUT FACILITY TO INFORM CONCRETE EQUIPMENT OPERATORS TO UTILIZE THE CWF.
- 3. THE CONCRETE WASHOUT FACILITY SHALL BE REPAIRED AND ENLARGED OR CLEANED OUT AS NECESSARY TO MAINTAIN CAPACITY FOR WASTED CONCRETE.
- 4. WHEN CWF ARE NO LONGER REQUIRED FOR THE WORK, THE HARDENED CONCRETE AND MATERIALS USED TO CONSTRUCT THE CWF SHALL BE REMOVED AND DISPOSED OF.
- 5. WHEN THE CONCRETE WASHOUT FACILITY IS REMOVED, THE HOLES, DEPRESSIONS OR OTHER GROUND DISTURBANCE SHALL BE BACKFILLED, REPAIRED AND STABILIZED.



CROSS SECTIONAL VIEW

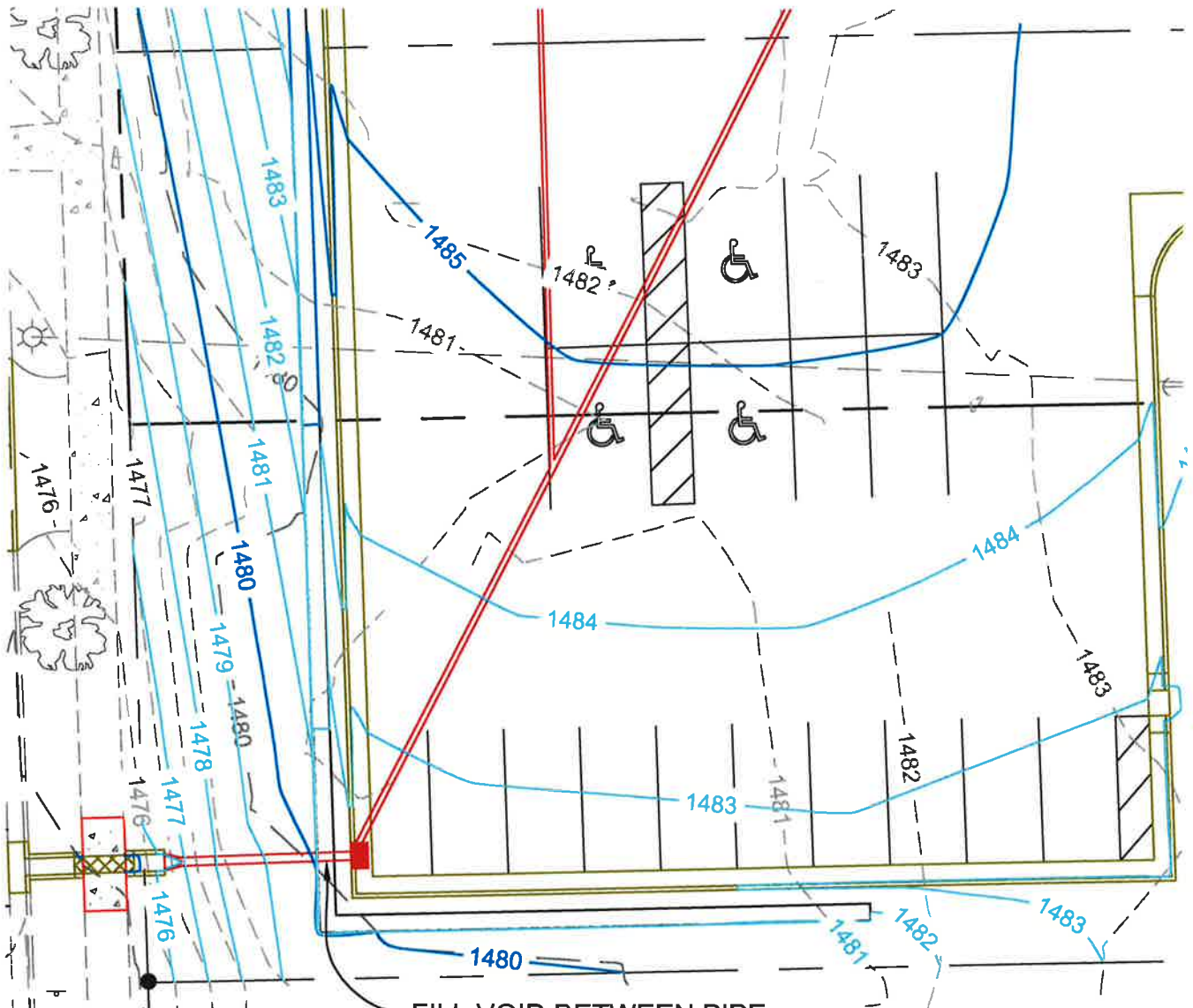
REVISED: DECEMBER 2008

**SPECIFICATION
REFERENCE
NO.
734**



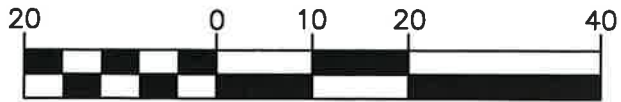
**CITY OF SIOUX FALLS
ENGINEERING DIVISION
CONCRETE WASHOUT FACILITY**

**PLATE
NUMBER
734.28**



FILL VOID BETWEEN PIPE
AND RETAINING WALL
UNITS WITH CONCRETE.
BUILDING

GRAPHIC SCALE



(IN FEET)

Sayre
Associates

216 S. Duluth Avenue • Sioux Falls, SD 57104
Phone: (605) 332-7211 • Fax: (605) 332-7222

Engineers • Surveyors