

Addendum No. 3
September 19, 2018

Project: **Sioux Falls Lutheran School**
Sioux Falls, South Dakota
Arch Project No. 2765

Architect: Architecture Incorporated

Letting: **Thursday, September 20, 2018**
2:00 p.m.
Architecture Incorporated
415 S. Main Avenue
Sioux Falls, South Dakota 57104

Scope of this Addendum:

To all bidders and all others to whom drawings and specifications have been issued by Architecture Incorporated.

Acknowledge receipt of this addendum by listing its number and date in the bidders Form of Proposal. Failure to do so may subject bidder to disqualification. This Addendum forms a part of the Contract Documents. It modifies them as follows:

GENERAL ITEMS:

1) SECTION 012300 – ALTERNATES:

a) *SCHEDULE OF ALTERNATES* CLARIFICATION:

- i) Alternate No. 3 incorrectly states that the procurement and installation of MEP fixtures associated with Alternate No. 3 be included under Alternate No. 2; revise paragraph C.1.a.3.a to read:

a) *Procurement and installation of MEP fixtures and finishes shall be included under Alternate No. 3; reference mechanical and electrical drawings for additional information*

2) SECTION 123216 – INSITUTIONAL CASEWORK:

- a) CLARIFICATION: All solid surface material shown at window sill and window seat locations shall be Owner-furnished and Contractor-installed.

- i) All Owner-furnished solid surface window sills / window seats will be supplied by Formatop.

3) SHEET 5.14 – WINDOW ELEVATIONS & DETAILS:

a) CLARIFICATION: Unless indicated/clarified otherwise herein, the basic head, jamb and sill construction at aluminum windows Type A, Type B & Type C shall be as shown per plan details 1, 2 & 3 on Sheet 5.14.

i) Window Sills at Administrative Areas:

- (1) The head and jamb details for the nine (9) Type A aluminum windows located in the administrative office areas shall be as indicated per the *Window Types Schedule* on Sheet 5.14.
- (2) The sill height of the nine (9) Type A aluminum windows located in the administrative office areas shall be 36" A.F.F. as indicated per the *Window Types Schedule*.
 - (a) Disregard the 'window seat' construction identified per detail 3/5.14. Window seats shall not be installed in the administrative offices.
 - (i) Reference rooms Office C101, Business Manager C102, Superintendent C103, Office C104, Office C105, Office C106 & Staff Workroom C115.
 - (b) Provide a typical solid surface sill detail similar to that shown per plan detail 6/5.49; window sill/stool to terminate at interior face of exterior wall.

ii) Window Sills at Area D Classrooms:

- (1) The head and jamb details for the sixteen (16) Type B & C aluminum windows located in the typical Area D classrooms shall be as indicated per the *Window Types Schedule* on Sheet 5.14.
- (2) The sill height of all sixteen (16) Type B & C aluminum windows located in the typical Area D classrooms shall be 12" A.F.F. as indicated per the *Window Types Schedule*.
- (3) Provide window seats (as detailed per 3/5.14) at the following Area D classroom locations:
 - (a) At the Type B window in Preschool D104.
 - (b) At the Type C window in Preschool D107.
 - (c) At the Type B window in Preschool D108.
 - (d) At the Type C window in Preschool D111.
 - (e) At the Type B window in Preschool D112.
 - (f) At the Type B window in Preschool D115.
 - (g) At the Type C window in Preschool D118.
 - (i) NOTE: Window seats shall begin at inside corner of intersection between interior partition and the exterior wall; seat to extend out from corner for an overall length of 96".
- (4) Unless indicated otherwise, disregard the 'window seat' construction identified per detail 3/5.14 at all remaining Area D classroom windows. Window seats shall not be required.
 - (a) Provide a typical solid surface sill detail similar to that shown per plan detail 8/5.48; window sill/stool to terminate at interior face of exterior wall.

iii) Window Sills at Area E Classrooms:

- (1) The head and jamb details for the seventeen (17) Type B & C aluminum windows located in the typical Area E classrooms shall be as indicated per the *Window Types Schedule* on Sheet 5.14.
- (2) The sill height of all seventeen (17) Type B & C aluminum windows located in the typical Area E classrooms shall be 12" A.F.F. as indicated per the *Window Types Schedule*.
- (3) Provide window seats (as detailed per 3/5.14) at the following Area E classroom locations:
 - (a) At the Type C window in 1st Grade E104.
 - (b) At the Type C window in Multi-Classroom E107.
 - (c) At the Type B window in M.S. Classroom E108.
 - (d) At the Type C window in M.S. Classroom E109.
 - (e) At the Type C window in M.S. Classroom E119.
 - (f) At the Type B window in 4th Grade E120.
 - (g) At the Type C window in 3rd Grade E121.
 - (h) At the Type B window in 2nd Grade E122.
 - (i) NOTE: Window seats shall begin at inside corner of intersection between interior partition and the exterior wall; seat to extend out from corner for an overall length of 96".
- (4) Unless indicated otherwise, disregard the 'window seat' construction identified per detail 3/5.14 at all remaining Area E classroom windows. Window seats shall not be required.
 - (a) Provide a typical solid surface sill detail similar to that shown per plan detail 8/5.48; window sill/stool to terminate at interior face of exterior wall.

iv) Window Sills at M.S. Science E118:

- (1) The head and jamb details for the two (2) Type C aluminum windows located in M.S. Science E118 shall be as indicated per the *Window Types Schedule* on Sheet 5.14.
- (2) The sill height of the two (2) Type C aluminum windows located in in M.S. Science E118 shall be 12" A.F.F. as indicated per the *Window Types Schedule*.
 - (a) Disregard the 'window seat' construction identified per detail 3/5.14. Window seats shall not be installed in M.S. Science E118.
 - (b) Provide a typical solid surface sill detail similar to that shown per plan detail 8/5.48; window sill/stool to terminate at interior face of exterior wall.

v) Window Sills at Media Center C119 & Art C120:

- (1) The sill detail for the three (3) Type C aluminum windows located in Media Center C119 and the three (3) Type B aluminum windows located in Art C120 shall be similar to that

shown per plan detail 8/5.48; window sill/stool to terminate at interior face of exterior wall.

(a) Disregard the 'window seat' construction identified per detail 3/5.14. Window seats shall not be installed in Media Center C119 or Art C120.

vi) Window Sills at Tornado Shelters:

(1) The sill detail at aluminum windows located in tornado shelters shall be as indicated per detail 13/5.14. (NO window seats)

MECHANICAL ITEMS:

1) SHEET 8.30 – FLOOR PLAN – AREA A – VENTILATION & A/C:

- a) Corridor A121 - Add (3) G2 grilles.
 - i) Reference revised mechanical drawing Sheet R8.30, dated 9-19-18, attached to the end of this addendum.

ELECTRICAL ITEMS:

1) N.A.

GENERAL APPROVALS:

The following material or equipment furnished by the manufacturer's listed, may be substituted as equivalent providing that each item, material, and piece of equipment conforms to the design and requirement of the specifications.

<u>SECTION</u>	<u>ITEM</u>	<u>MANUFACTURER</u>
----------------	-------------	---------------------

N.A.

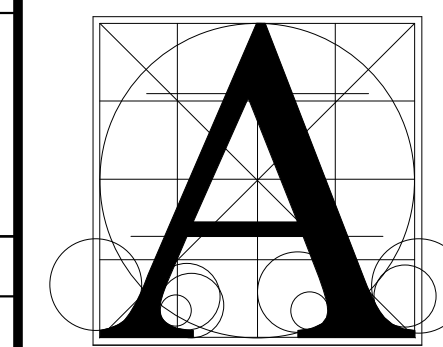
END OF ADDENDUM #3

GENERAL SHEET NOTES

1. THE CEILING SPACE AVAILABLE REQUIRES COORDINATION WITH OTHER TRADES. THE CONTRACTORS SHALL PROVIDE ALL OFFSETS AND RELOCATE AS REQUIRED TO COORDINATE THE INSTALLATION OF ALL MATERIALS AND EQUIPMENT WITH OTHER TRADES.

VENTILATION NOTES

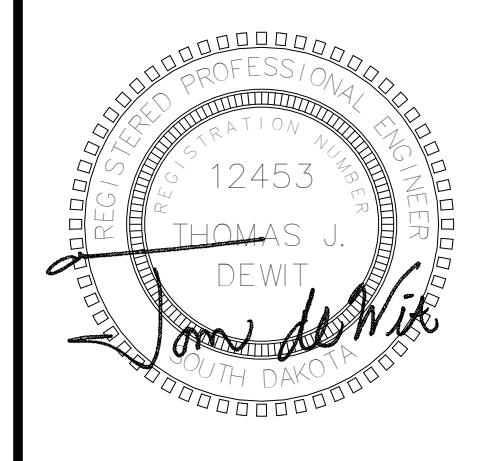
1. Fan powered vav terminal above ceiling. Provide sound attenuation boot. (typical)
2. E/A DUCT UP TO PRV MOUNTED ON ROOF. PROVIDE FULL ROOF CURB.
3. BALANCE DAMPER. (TYPICAL)
4. DUCTLESS SPLIT SYSTEM WITH CONDENSING UNIT MOUNTED ON ROOF ON 4" CONCRETE PAD BY THE G.C.
5. EXPOSED DUCT SHALL BE PAINT GRIP TYPE. COLOR BY ARCHITECT. COORDINATE DUCTWORK WITH OTHER TRADES.
6. SIDEWALL RIA GRILLE. COLOR BY ARCHITECT. (TYPICAL)
7. SEE SHEET 8.35 FOR CONTINUATION.



**Architecture
Incorporated**

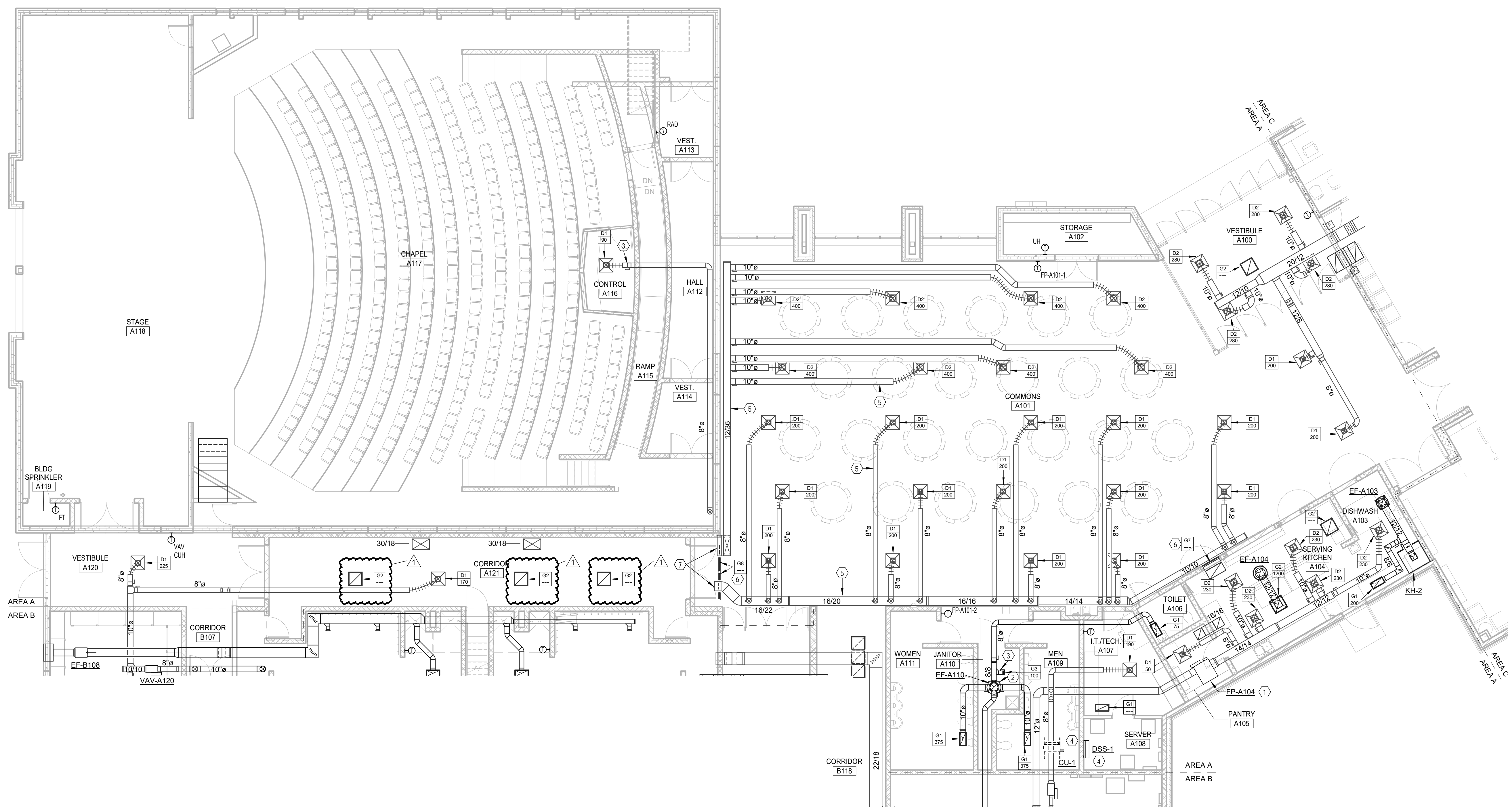
415 South Main Avenue
P.O. Box 2140
Sioux Falls, South Dakota
Phone: (605) 339-1711

815 St. Joseph Street, Suite 203
P.O. Box 8047
Rapid City, South Dakota
Phone: (605) 721-1158

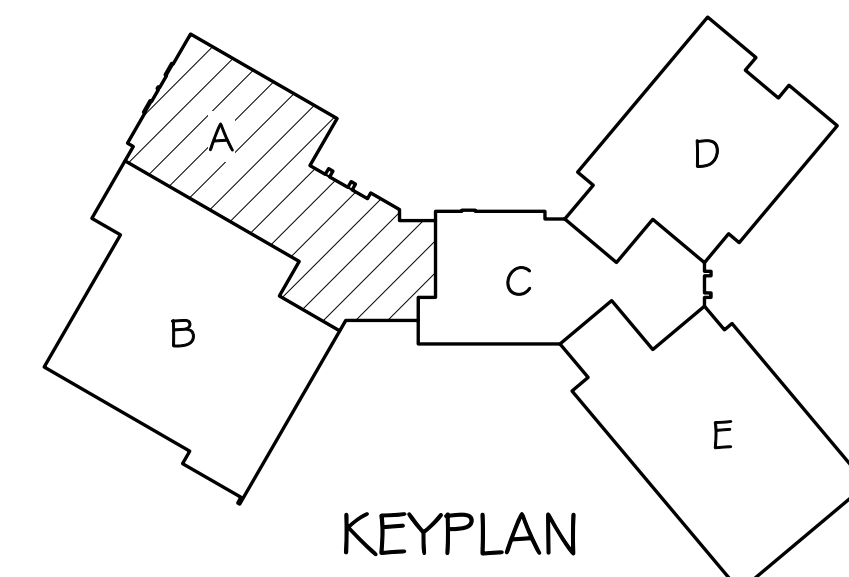


**Associated
Consulting
Engineering,
Incorporated**

340 S. Phillips Ave.
Sioux Falls, SD 57104
(605) 335-3720
Fax: 335-6220
E-mail: ace@aceinet.com



FLOOR PLAN - AREA A - VENTILATION & A/C
SCALE: 1/8" = 1'-0"



SIoux FALLS LUTHERAN SCHOOL

FLOOR PLAN - AREA A - VENTILATION & A/C

Project	number	118049
date	AUGUST 24, 2016	
revision		
drawn	DDK	checked Td
NO.	DATE	DESCRIPTION
1	9-19-16	Addendum 3

R8.30

9/19/2016 7:47:28 AM