

Addendum No. 2
May 20, 2020

Project: Fitzgerald Stadium Renovations
Rapid City, SD
City Project # 19-2508 / CIP 51231
Architect Project #2692

Architect: Architecture Incorporated

Letting: **Tuesday, May 26, 2020**
2:00 PM MDT
City Finance Office, City Hall
300 Sixth Street, Rapid City, South Dakota 57701

Scope of this Addendum:

To all bidders and all others to whom drawings and specifications have been issued by Architecture Incorporated.

Acknowledge receipt of this addendum by listing its number and date in the bidders Form of Proposal. Failure to do so may subject bidder to disqualification. This Addendum forms a part of the Contract Documents. It modifies them as follows:

GENERAL ITEMS:

1) SPECIFICATION SECTION 012900 – PAYMENT PROCEDURES:

- a) Paragraph 1.5 D., Applications for Payment: Add the following subparagraph:
 - i) 3. For each progress payment made prior to Substantial Completion of the Work, the Owner will withhold Eight percent (8%), as retainage, from the payment otherwise due.

2) SPECIFICATION SECTION – 084113 ALUMINUM-FRAMED ENTRANCES AND STOREFRONTS

- a) Paragraph 2.3.A.1 – Delete [Thermally Broken] replace with [Non-Thermal]

3) SPECIFICATION SECTION – 088000 GLAZING

- a) CLARIFICATION Paragraph 2.11 IMPACT RESISTANT LAMINATED GLASS TYPES (ISSUED IN ADDENDUM NO. 1) - Delete line (v) Low-E Coating: [Pyrolytic or sputtered on second] face.

4) DRAWING SHEETS 2.41 / 2.42 / 2.43 – PLAZA LAYOUT PLANS:

- a) Clarification: No reinforcement is required for 6” concrete pavement on stadium entrance, upper concourse, and walkways. Reinforcement is required for concrete ramps and pavement supporting adjacent retaining walls as indicated of structural plans 3.53.

5) DRAWING SHEET 2.44 – WEST RAMP AND SECTIONS:

- a) Clarification: Reinforcement is required for concrete ramps and pavement supporting adjacent retaining walls as indicated of structural plans 3.53.

6) DRAWING SHEET 2.46 – SITE DETAILS:

- a) Detail ‘A’ – 6” Concrete Pavement: Clarification: No reinforcement is required for 6” concrete pavement.
- b) Detail ‘O’ – Concrete Edge/Stadium Section: Clarification: No reinforcement is required for 6” concrete pavement for upper concourse. Reinforcement is required for concrete slab at the top of stadium seating as indicated on structural plans 3.13 and 3.52.

GENERAL APPROVALS:

The following material or equipment furnished by the manufacturer's listed, may be substituted as equivalent providing that each item, material, and piece of equipment conforms to the design and requirement of the specifications.

SECTION	ITEM	MANUFACTURER
123216	INSTITUTIONAL CASEWORK	PATZER WOODWORKING
126313	STADIUM AND ARENA BENCH SEATING	CBS CONSTRUCTORS

CIVIL ITEMS:

7) TRENCH DRAIN – Approved equal product

- a) In lieu of the ACO Trench Drain system as detailed in the details the ABT’s PolyDrain 6” ID Precast Polymer Concrete Trench Drain System with stainless steel reinforced perforated heel-proof, load class C, ADA compliant grate is approved equal product.

8) SPECIFICATION SECTION – 321800 FIELD STONE MATERIALS AND DRAINAGE SYSTEM

- a) Paragraph 2.4.1: Delete 2.4.1 entirely and replace with the following 2.4.1

2.4.1 The stone shall be crushed limestone ledge rock meeting the following gradations (% passing): Either Crushed Stone Type 1 or Type 2 can be used.

Sieves	CRUSHED STONE** Type 1	CRUSHED STONE** Type 2	FINISH STONE**	¾” CLEAN ROCK*
2" or 50mm	100			
1 1/2" or 38mm	90-100			
1" or 25mm	75-100	100		
¾" or 19mm	65-95	90-100		100
½" or 12.5mm	55-85	80-100	100	
⅜" or 9.5mm	40-75	70-100	85-100	
¼" or 6.3mm	25-65	80-90		
US #4 or 4.75mm	15-60	50-85	10-30	
US #8 or 2.36mm	0-40	30-65	0-10	
US #16 or 1.18mm	0-20	10-50	0-5	
US #30 or 600µm	0-10	0-35		
US #40				0-10
US #60 or 250µm	0-8	0-15		
US #100 or 150µm	0-6	0-8		
US #200 or 75µm	0-5	0-2	0-2	0-5

*Material shall have 85% larger (D₈₅) equal to or greater than the perforation size of the of the pipe and shall be verified by a material testing agency and submitted to the Engineer.

** The proposed Base Stone and Finish Stone materials must be approved by the design team prior to transport to the site. To ensure separation of the Base Stone and the Finishing Stone materials, the following gradational ratios should be observed:

Restrictions:

To ensure structural stability: $D_{60} / D_{10} > 5$ and $1 < \frac{D_{50}^2}{D_{10} D_{60}} < 3$
Fragmentation must be 100%

To ensure separation of both stones:

$$\frac{D_{85} \text{ of Finishing Stone}}{D_{15} \text{ of Base Stone}} > 2$$

and

$$3 < \frac{D_{50} \text{ of Base Stone}}{D_{50} \text{ of Finishing Stone}} < 6$$

“Dx” is the size of the sieve (in mm) that lets pass X% of stone.

STRUCTURAL ITEMS: See attached Addendum No. 2 from Albertson Engineering Inc.

MECHANICAL ITEMS: See attached Skyline Engineering Mechanical Addendum #2.

ELECTRICAL ITEMS: See attached Skyline Engineering Electrical Addendum #2.

END OF ADDENDUM



Albertson Engineering Inc.

ADDENDUM No. 2 - STRUCTURAL ITEMS

PROJECT: Fitzgerald Stadium
AEI #2019-357

DATE: May 20, 2020

REMARKS:

Please note the following structural addendum items for Addendum No. 2 as follows:

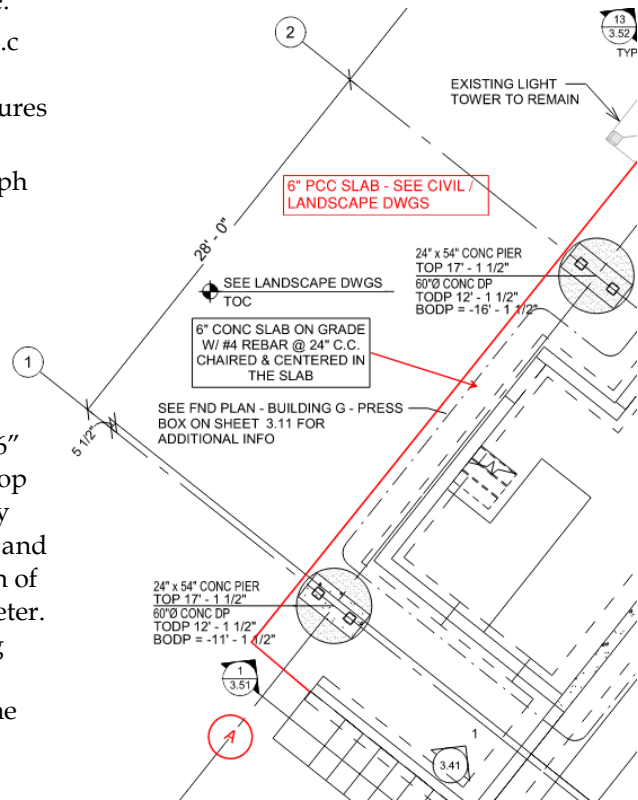
Specifications:

1. 033000 - Cast-in-Place Concrete:
 - a. Delete 1.5.A.4.b and 1.5.A.4.c subparagraph references to permeable concrete admixtures in their entirety.
 - b. Delete 1.6.B.2.a subparagraph with regard to permeable concrete admixture in its entirety.

Drawings:

Foundation Plan - Sheet 3.13

1. Clarification: The limits of the 6" reinforced concrete slab at the top of the stadia seating is bound by the stadia staircases on the east and west ends and is 2'-4 1/8" north of Grid A around the outer perimeter. Slabs thereafter are PCC paving per the civil and landscape drawings. See partial plan to the right.



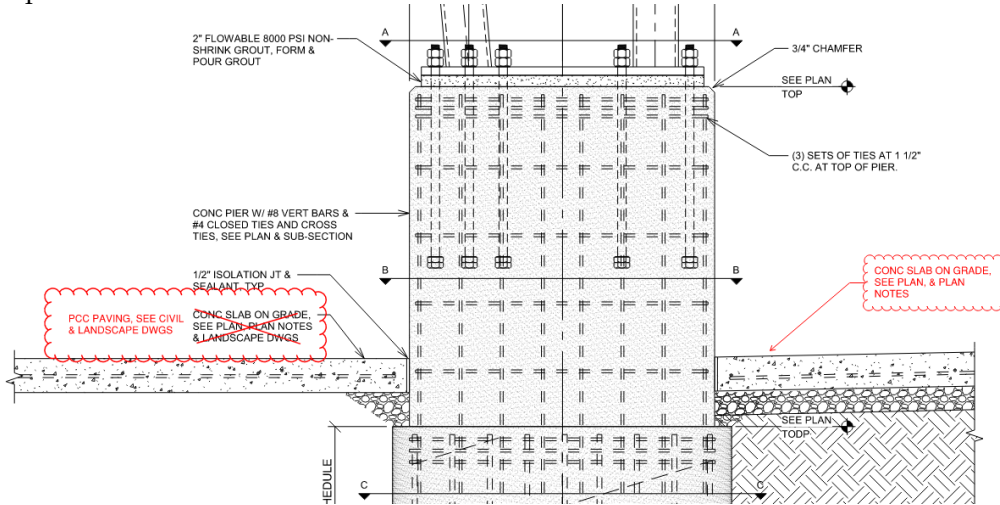
Albertson Engineering Inc.
Rapid City
3202 West Main, Suite C
Rapid City, SD 57702
605-343-9606

Sioux Falls
315 North Main Avenue, Suite 200
Sioux Falls, SD 57104
605-274-0880

Winner
202 South Main
Winner, SD 57580
605-842-1144

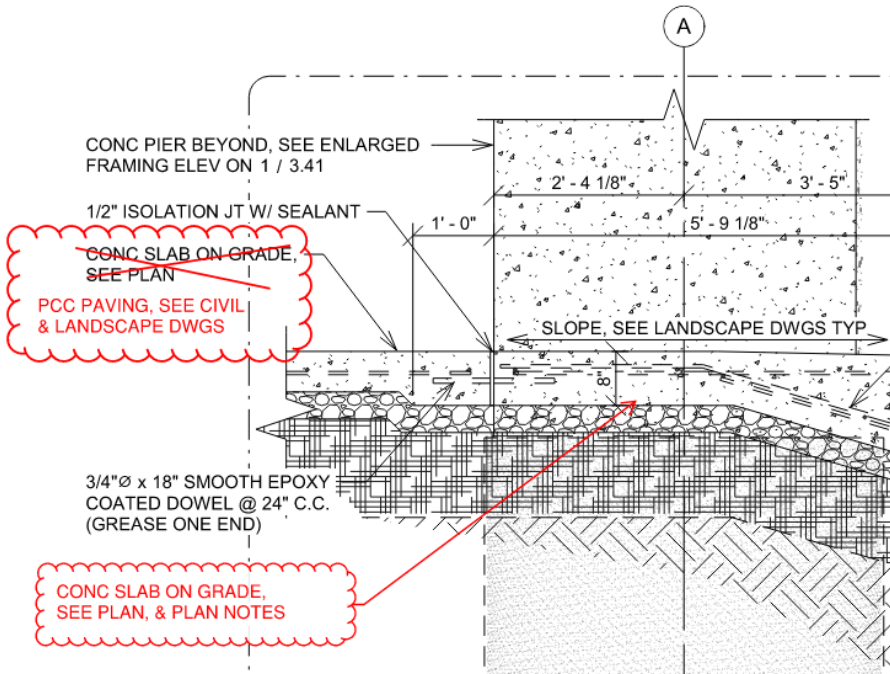
Enlarged Framing Elevations - Sheet 3.41:

1. Framing Elevation 1/3.41 - Clarification: The 6" reinforced slab referenced in plans is to the right of the concrete pilaster. The paving to the left is PCC paving, see civil and landscape drawings. See partial section below.




Risers & Seating Sections - Sheet 3.51:

1. Sections 1, 2 & 4 – Clarification: The 6" reinforced slab referenced in plans is to the right of the doweled joint. The paving to the left of the doweled joint is PCC paving, see civil and landscape drawings. See representative typical partial section below.

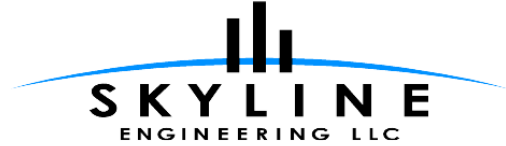


Sincerely,
Albertson Engineering, Inc.


David Leppert, V.E.
Principal

Cc: File





Attn: Jordan Burbach
Architecture Incorporated
815 St. Joseph St, #203
Rapid City, SD 57101

Project Name: Fitzgerald Stadium Improvements
Skyline Project Number: 19044
Addendum Number: 02
Date: May 20, 2020

ADDENDUM NO. 2 - MECHANICAL

This Addendum shall be considered as much a part of the Contract documents as though it had been issued with the original Documents as issued and written therein, in Division and Section. The bidder shall note receipt and make acknowledgment of this Addendum on his bid form, incorporating its provisions in his bid.

- 1) Specifications Revisions: None
- 2) Drawing Revisions: None
- 3) Prior Approvals. Subject to project requirements, the following manufacturers are allowed for bidding purposes:
 - a) Section 223400 Exp Tanks Watts Regulator
 - b) Section 223400 Water Heaters Lochinvar
 - c) Section 224213.16 Flush Valves American Standard
 - d) Section 224213.13 Water closet carriers Watts Drainage
 - e) Section 224213.16 Urinal carriers Watts Drainage
 - f) Section 224216.13 Lavatory Carriers Watts Drainage
 - g) Section 233400 HVAC Fans Twin City Fan, PennBarry
 - h) Section 238126 Mini-split HP Samsung
 - i) Section 238216 Electric Duct Coil Neptronic, Tutco
 - j) IH-1 Schedule Intake Hood Rupp, CaptiveAire, Acme Engineering

Attachments: None

END OF MECHANICAL ADDENDUM #02

ADDENDUM NO. 2 - ELECTRICAL

This Addendum shall be considered as much a part of the Contract documents as though it had been issued with the original Documents as issued and written therein, in Division and Section. The bidder shall note receipt and make acknowledgment of this Addendum on his bid form, incorporating its provisions in his bid.

- 1) Specifications Revisions:
 - a) None.
- 2) Drawing Revisions:
 - a) Sheet 9.10
 - i) Add general note G to read "All occ sensors must meet Basis of Design (B.O.D.) device

coverage. Vendors not meeting this requirement may not bid or must supply additional sensors to be equal in device coverage. EC shall provide additional conduit, wire, boxes, relays, etc. for a fully functioning system. Occ sensors and controls to be equal to the following:

- (1) CM1 – Leviton OSC05-MOW
- (2) CM3 – Leviton OSC20-MOW (wall mounted)
- (3) XP – Leviton ODS15-ID
- (4) XPdm – Leviton – OSD10-I0W
- (5) PB – Leviton OPB15-oDW
- (6) PP – Leviton OSP20-RDo
- (7) \$D – Leviton IP710-DLZ

3) Acceptable Equivalents:

a) Schedule of Lighting Equivalents:

- i) The following manufacturers are approved for bidding purposes. Note that any substitutions must meet all substitution requirements within the specifications and/or schedules.

Lighting-Fixture Types	Illumination Systems	Wyoming Lighting	Mlazgar	Lumen Fx
AF3		Metalux #24FP6435C		
AF3E		Metalux #24FP6435C-EL14W		
CF3		Metalux #22FP3235C		
CF3E		Metalux #22FP3235C-EL14W		
AS66		Oracle #OLS-R-LED-3"-TB-1516FT-S-6'-750L-DIM10-MVOLT-30K-85-WH		
ELU		Mule #MAKO-LED-ACEM-DB-IH		
P1-2A		LSI #MRM-LED-42L-SIL-2-UNV-DIM-40-70CRI-BRZ-IL		
P1-2A-L		LSI #MRM-LED-42L-SIL-2-L-UNV-DIM-40-70CRI-BRZ-IL		
P1-2A-R		LSI #MRM-LED-42L-SIL-2-R-UNV-DIM-40-70CRI-BRZ-IL		
P2-2A		(2) LSI #MRM-LED-42L-SIL-2-UNV-DIM-40-70CRI-BRZ-IL		
P2-2A-LR		LSI #MRM-LED-42L-SIL-2-L/R-UNV-DIM-40-70CRI-BRZ-IL (1 of each orientation)		
SC		Lumiere #303-W1-LEDB1-4000K-UNV-*-DIM10-*		
Occupancy Sensors Types				
\$D-010		Greengate WBSD-010DEC-C1		
\$D-ELV		Greengate WBSD-DEC-C1		

Attachments: None

END OF ELECTRICAL ADDENDUM #02