

Addendum No. 2
March 24, 2017

Project: Edison Middle School Window Replacement and Renovation
Sioux Falls, South Dakota

Project No: 2703

Architect: Architecture Incorporated

Letting: **Thursday, April 6, 2017**
2:00 PM
Central Services Center
1101 North Western Avenue
Sioux Falls, South Dakota 57104

Scope of this Addendum:

To all bidders and all others to whom drawings and specifications have been issued by Architecture Incorporated.

Acknowledge receipt of this addendum by listing its number and date in the bidders Form of Proposal. Failure to do so may subject bidder to disqualification. This Addendum forms a part of the Contract Documents. It modifies them as follows:

GENERAL ITEMS:

- 1) DRAWING SHEET 5.11
 - a) Detail B/5.11 – refer to Supplemental Drawing SD-1, attached to the end of this addendum, for modification to Window Type ‘C’ glazing and identification of existing conduit, cable & devices to remain or be removed and replaced at this elevation.

GENERAL APPROVALS:

The following material or equipment furnished by the manufacturer's listed, may be substituted as equivalent providing that each item, material, and piece of equipment conforms to the design and requirement of the specifications.

<u>SECTION</u>	<u>ITEM</u>	<u>MANUFACTURER</u>
085113	Aluminum Windows	Boyd Aluminum 4300 Series Project Out Windows

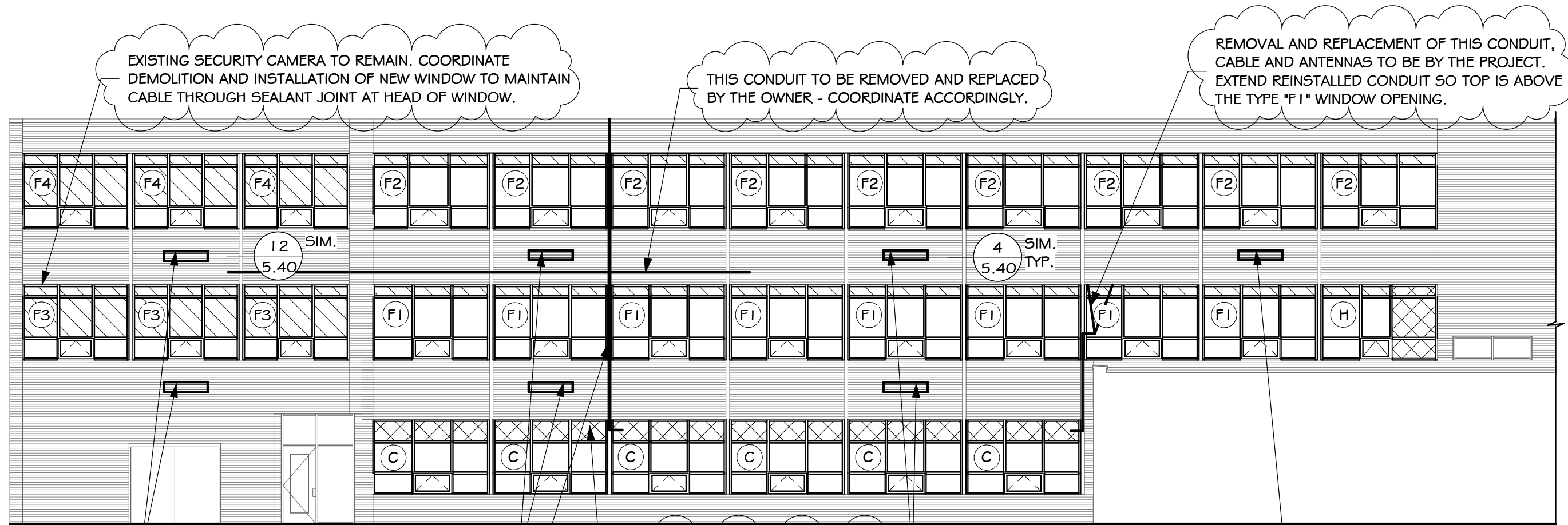
MECHANICAL ITEMS:

NA

ELECTRICAL ITEMS:

NA

END OF ADDENDUM



EXISTING SECURITY CAMERA TO REMAIN. COORDINATE DEMOLITION AND INSTALLATION OF NEW WINDOW TO MAINTAIN CABLE THROUGH SEALANT JOINT AT HEAD OF WINDOW.

THIS CONDUIT TO BE REMOVED AND REPLACED BY THE OWNER - COORDINATE ACCORDINGLY.

REMOVAL AND REPLACEMENT OF THIS CONDUIT, CABLE AND ANTENNAS TO BE BY THE PROJECT. EXTEND REINSTALLED CONDUIT SO TOP IS ABOVE THE TYPE "F1" WINDOW OPENING.

INFILL ABANDONED UNIT VENTILATOR INTAKE WITH 2" RIGID INSULATION & BRICK

REMOVAL AND REPLACEMENT OF THIS CONDUIT, CABLE AND GPS DEVICE AT PARAPET TO BE BY THE PROJECT.

PROVIDE 1" INSULATED PREFINISHED METAL PANEL TO MATCH WINDOW AT THE TOP ROW OF THESE SIX TYPE "C" WINDOWS. PROVIDE PENETRATIONS AND SEALANT AT REINSTALLED CONDUITS.

INFILL ABANDONED UNIT VENTILATOR INTAKE WITH 2" RIGID INSULATION & BRICK

1 WEST ELEVATION SIDE
SD-1 NO SCALE

DRAWING
SD-1

EDISON MIDDLE SCHOOL WINDOW REPLACEMENT & RENOVATION

Project number 1114.2703.16 drawn KCP checked MAA
 date 3-24-17 revision

Architecture Incorporated
 sioux falls and rapid city, south dakota