

Addendum No. 2
September 20, 2018

Project: **Trinity Reformed Church Addition**
Sioux Falls, South Dakota
Project No.: 2553

Architect: Architecture Incorporated

Letting: **Thursday, October 4, 2018**
2:00 PM
Architecture Incorporated
415 South Main Avenue
Sioux Falls, South Dakota 57104

Scope of this Addendum:

To all bidders and all others to whom drawings and specifications have been issued by Architecture Incorporated.

Acknowledge receipt of this addendum by listing its number and date in the bidders Form of Proposal. Failure to do so may subject bidder to disqualification. This Addendum forms a part of the Contract Documents. It modifies them as follows:

GENERAL ITEMS:

1) GENERAL

- a) Invited bidders may arrange a time to visit the existing church between the hours of 9:00 a.m. and 6:00 p.m. Monday through Saturday by contacting Pastor McGee at 605-553-1389.

2) DRAWING SHEET 2.10 – SITE PLANS

- a) Site Plan – Vinyl fence at the north side of the building shall be 6'-0" tall in lieu of 8'-0" tall.

3) SHEET 3.20 – FOUNDATION PLAN

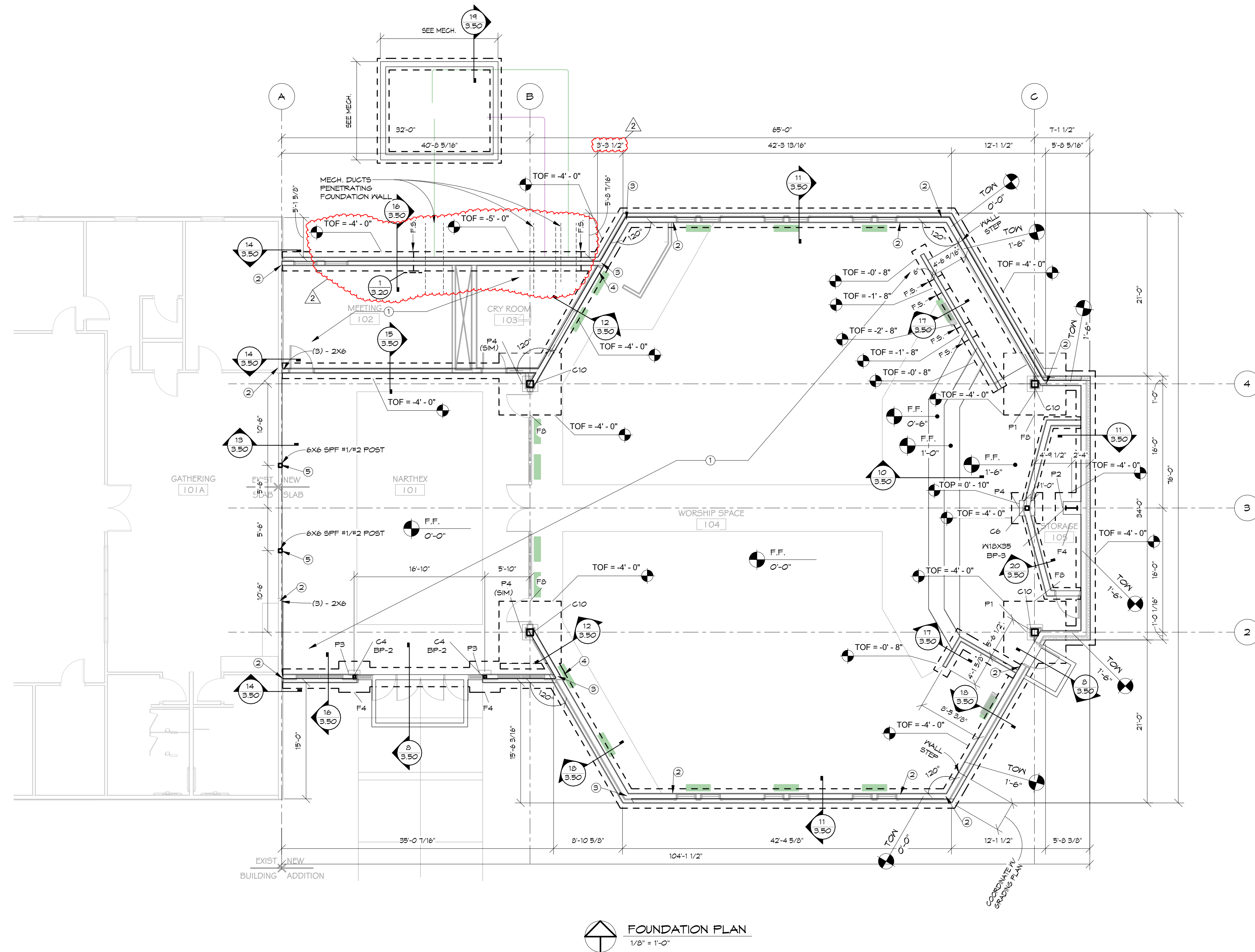
- a) Reference revised drawing sheet 3.20 (dated 9-20-18) attached to the end of this addendum for footing steps at HVAC ducts.
- b) Add footing step detail 1 on sheet 3.20.
- c) Change foundation dimensions clouded on revised drawing sheet 3.20.

GENERAL APPROVALS:

The following material or equipment furnished by the manufacturers listed, may be substituted as equivalent providing that each item, material, and piece of equipment conforms to the design and requirement of the drawings and specifications.

<u>SECTION</u>	<u>ITEM</u>	<u>MANUFACTURER</u>
265119	Light Fixtures	<i>See Below:</i>
	Type A	Alphalite
	Type C5, C7, C10	Liton
	Type H	SPI, OCL
	Type R	Liton
	Type S	SPI, DM Lighting
	Type T	Bruck, Liton
	Type W	Choride

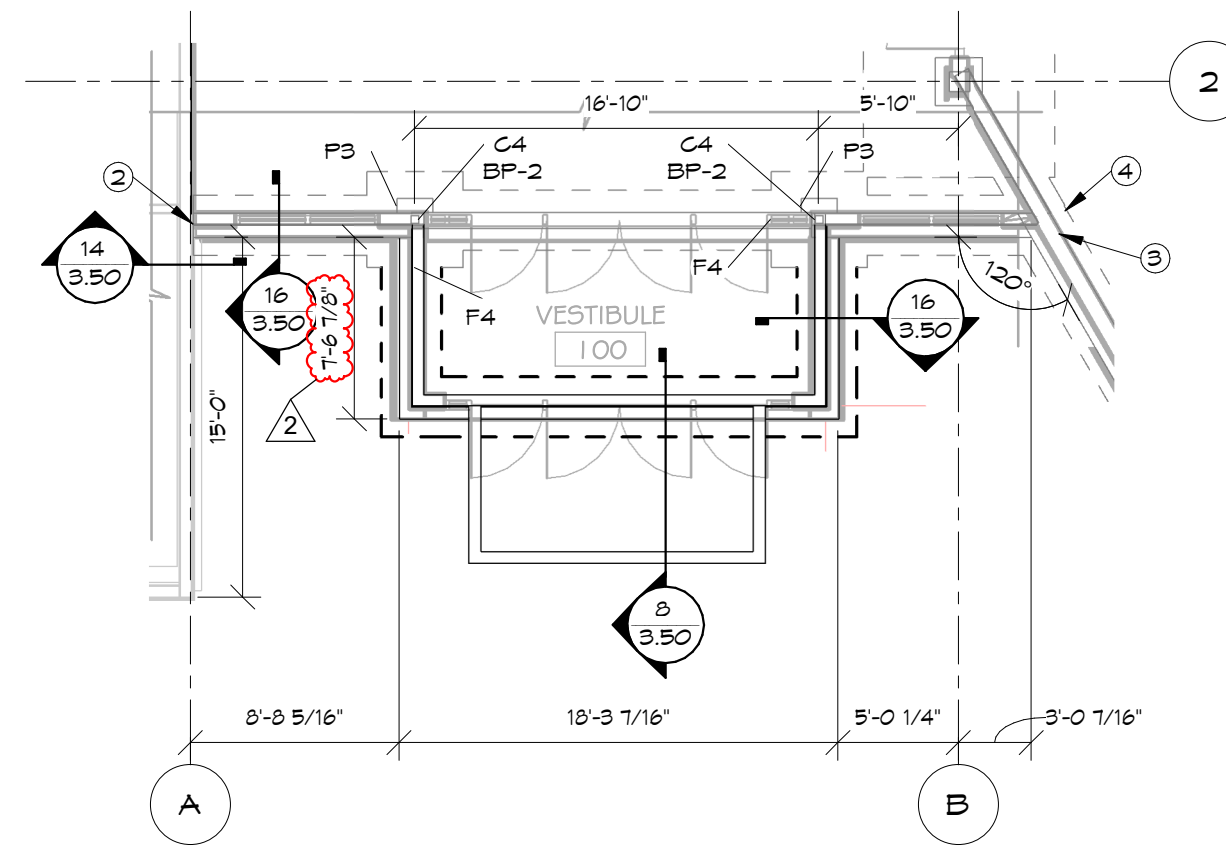
END OF ADDENDUM



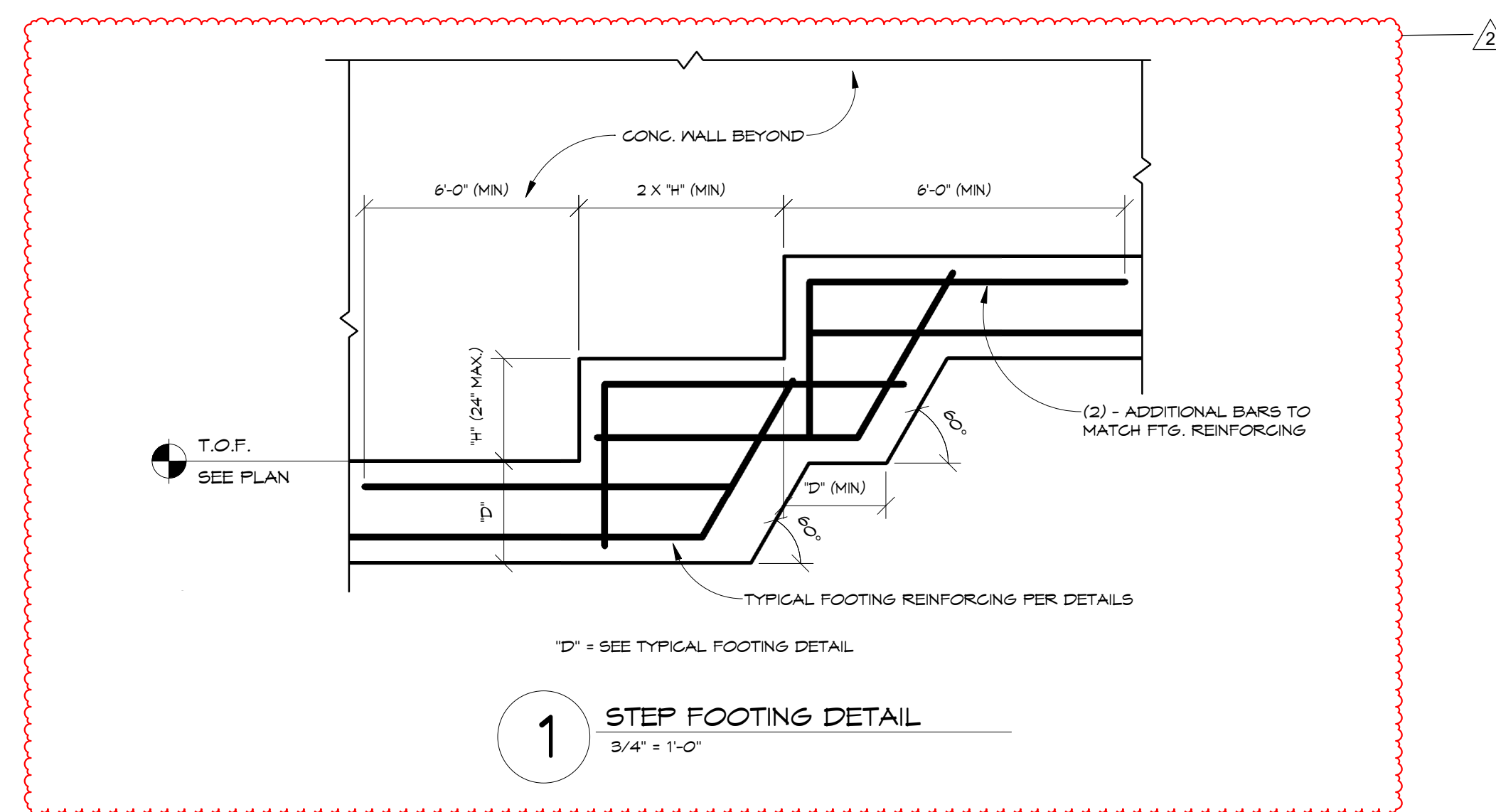
FOUNDATION PLAN
1/8" = 1'-0"

FOOTING SCHEDULE		
TYPE MARK	DESCRIPTION	REINFORCING
F4	4'-0" SQ X 1'-0" THICK	(4)-#6 EACH WAY BOTTOM
F8	8'-0" SQ X 1'-2" THICK	(8)-#6 EACH WAY BOTTOM

COLUMN SCHEDULE	
MARK	TYPE
C4	HSS4X4X1/4
C6	HSS6X6X1/4
C10	HSS10X10X1/4



ADD ALT. #1 VESTIBULE FOUNDATION PLAN
1/8" = 1'-0"



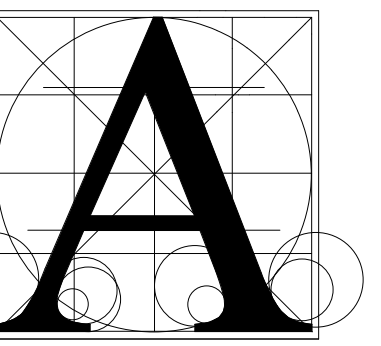
STEP FOOTING DETAIL
3/4" = 1'-0"

FOUNDATION GENERAL NOTES

- REFER TO SHEET 3.40 FOR TYPICAL COLUMN BASE PLATES AND ANCHOR BOLT REQUIREMENTS. APPLY BR-1 TYPICAL UNLESS INDICATED BR-4 ON THE FOUNDATION PLANS.
- CONCRETE PIER DETAILS ARE INDICATED THUS "PI" REFER TO SHEET 3.40 FOR TOP OF PIER DETAILS.
- REFER TO DETAILS 1, 2 & 3/3.50 FOR TYPICAL CONCRETE FOUNDATION WALL CONSTRUCTION. SPLICE ALL REBAR ACCORDING TO SPLICE TABLE ON SHEET 3.50.
- COORDINATE PIPE RUNS UNDER FOOTINGS OR THROUGH THE FOUNDATION WALLS WITH DETAIL 4/3.50.
- SLAB-ON-GRADE JOINTS SHALL COMPLY WITH DETAIL 4/3.50.
- SEE ARCHITECTURAL DRAWINGS FOR LOCATION OF SLOPED, RAISED, OR DEPRESSED SLABS.
- IT IS THE RESPONSIBILITY OF THE GENERAL CONTRACTOR TO COORDINATE ALL SLAB PENETRATIONS WITH MECHANICAL, ELECTRICAL, OR ARCHITECTURAL DRAWINGS.
- IT IS THE RESPONSIBILITY OF THE GENERAL CONTRACTOR TO COORDINATE ALL STUOP LOCATIONS AND SIZES WITH THE ARCHITECTURAL PLANS.
- CONTINUE REINFORCING FOR CONTINUOUS WALL FOOTINGS THROUGH PAD FOOTINGS (TYPICAL).
- SEE DETAIL 7/3.50 FOR UPPER GROUND CONSTRUCTION. G.C. COORDINATE EXACT LOCATION W/ ELECTRICAL EQUIPMENT SUPPLIER AND ELECTRICAL ENGINEER.

FOUNDATION PLAN NOTES

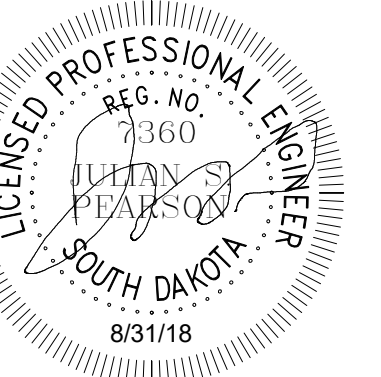
- SLAB-ON-GRADE: 4" CONCRETE OVER FREE-DRAINING GRANULAR BASE AS REQUIRED BY GEOTECHNICAL REPORT. PROVIDE #4 REINFORCING BARS @ 2'-0" ON-CENTER EACH WAY CENTERED AT MID-DEPTH AND SUPPORTED WITH CHAIRS OR BOLSTERS. SPACE CONTROL JOINTS AT 12'-0" MAXIMUM.
- SHEARWALL HOLD-DOWN LOCATION AT BASE OF WALL. SEE SHEARWALL ELEVATION ON FRAMING PLANS. PROVIDE SIMPSON HDUB-SDE2.5 HOLD-DOWN ANCHORED TO CONCRETE FOUNDATION W/ 5/8"x1/4" THREADED ROD & SIMPSON "AT-XP" EPOXY.
- SHEARWALL HOLD-DOWN LOCATION AT BASE OF WALL. SEE SHEARWALL ELEVATION ON FRAMING PLANS. PROVIDE SIMPSON HDUB-SDE2.5 HOLD-DOWN ANCHORED TO CONCRETE FOUNDATION W/ 1/2"x1/8" THREADED ROD & SIMPSON "AT-XP" EPOXY.
- PROVIDE (2) - #8 BARS HOOKED INTO EXTERIOR WALL FOR INTERIOR FOOTING REINFORCEMENT LAP.
- PROVIDE SIMPSON CPT66Z POST BASE WITH (2) 1/2" X 4 1/4" HLT1 WALK-HSB EC CONCRETE ANCHORS.



Architecture Incorporated

415 South Main Avenue
P.O. Box 2140
Sioux Falls, South Dakota 57101
Phone: (605) 339-1711

815 St. Joseph Street, Suite 203
P.O. Box 8047
Rapid City, South Dakota 57701
Phone: (605) 721-1158



515 South Cliff Ave., Ste 200
Sioux Falls, SD 57104
Phone: 605-335-4071
Fax: 605-332-2156
trent@apexst.net



TRINITY REFORMED CHURCH ADDITION

FOUNDATION PLAN

number	
date	03/1/18
revision	
drawn	NW
checked	JP

NO.	DATE	DESCRIPTION
1	9.20.18	ADDENDUM #2

STRUCTURAL
3.20