

Addendum No. 1
January 7, 2020

Project: Sanford School of Medicine First Floor Renovations
Sioux Falls, South Dakota
OSE Project #R0620--07X
Architecture Incorporated Project #2863

Architect: Architecture Incorporated

Letting: Thursday, January 30, 2020
2:00 P.M.
Office of the State Engineer, Joe Foss Building, 523 East Capitol, Pierre, South Dakota

Scope of this Addendum:

To all bidders and all others to whom drawings and specifications have been issued by Architecture Incorporated, this Addendum forms a part of the Contract Documents. Acknowledge receipt of this addendum by listing its number and date in the bidder's Form of Proposal. Failure to do so may subject bidder to disqualification. This addendum modifies the drawings and specifications as follows:

GENERAL ITEMS:

1) GENERAL ITEMS

- a) Clarification – Sanford School of Medicine First Floor Renovations project is located at 1400 West 22nd Street, in Sioux Falls, South Dakota, 57105.

2) SPECIFICATION SECTION 011000 – SUMMARY

- a) Part 1.9.B.4, add the following subitem 'b.':

“b. Student testing is scheduled for June 19, 2020 in the room (L15) directly below the project limits. No work causing intrusive noise levels shall occur on this date.”

MECHANICAL ITEMS:

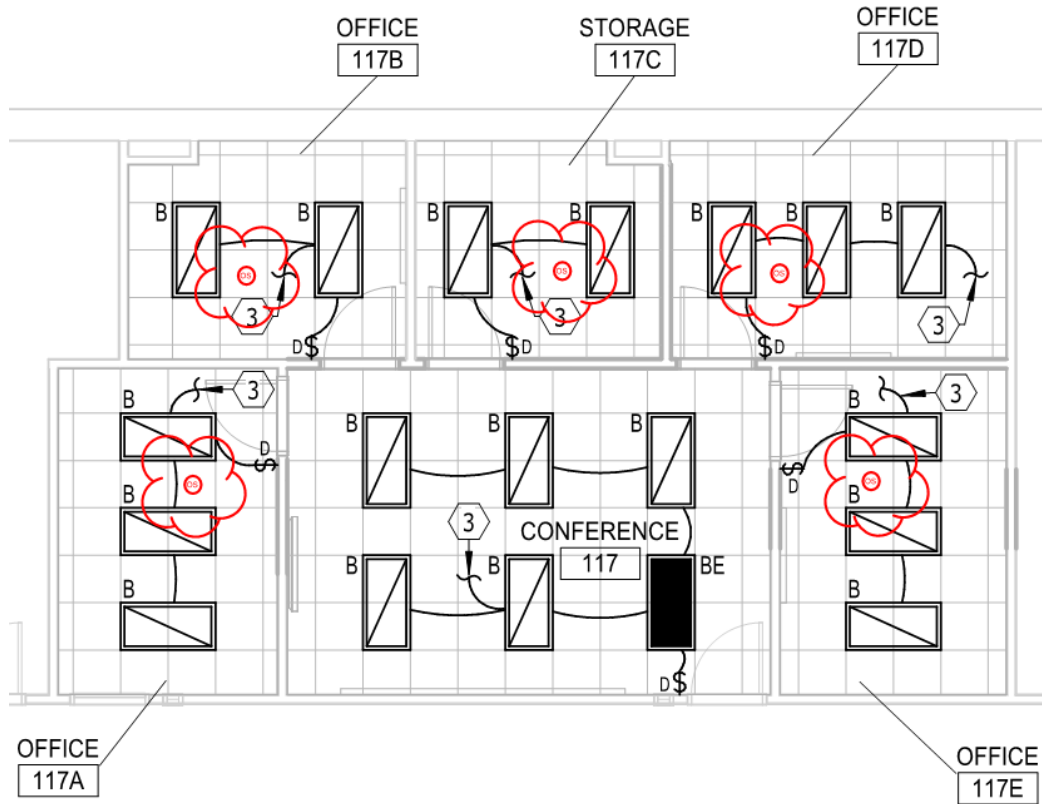
NA

ELECTRICAL ITEMS:

1) DRAWING SHEET 9.20 – FIRST FLOOR – LIGHTING

- a) In reference to all offices, add lighting control devices in each of the (5) offices with the following performance characteristics (5 devices total):
 - i) The ceiling mounted dual-technology occupancy sensor devices shall allow lights to be turned OFF automatically (they may also be turned OFF manually).
 - ii) Lights are ONLY turned ON manually.
 - iii) The ceiling-mounted sensors shall interlock with the wall-mounted dimmer switches originally shown.

- iv) All rooms shall have sensor control PLUS manual control.
- v) Quantities/locations shown on image below.



GENERAL APPROVALS:

The following material or equipment furnished by the manufacturers listed, may be substituted as equivalent providing that each item, material, and piece of equipment conforms to the design and requirement of the specifications.

SECTION	ITEM	MANUFACTURER
NA		

END OF ADDENDUM