

Addendum No. 1
February 15, 2018

Project: Brandon Valley High School Classroom Remodel
Brandon, South Dakota

Project #: 2747

Architect: Architecture Incorporated

Letting: **Thursday, February 22, 2018**
3:00 PM
Brandon Valley School District Administration Center Conference Room
300 South Splitrock Boulevard
Brandon, South Dakota 57005

Scope of this Addendum:

To all bidders and all others to whom drawings and specifications have been issued by Architecture Incorporated.

Acknowledge receipt of this addendum by listing its number and date in the bidders Form of Proposal. Failure to do so may subject bidder to disqualification. This Addendum forms a part of the Contract Documents. It modifies them as follows:

GENERAL ITEMS:

1) SECTION 083113 – ACCESS DOORS & FRAMES

a) Reference specification Section 083113 attached to the end of this Addendum for flush ceiling access panels to be installed in existing plaster and gypsum board ceilings as a part of Alternate No. 1.

i) The General Contractor shall include furnishing and installing 20 (twenty) flush access panels, 24” x 24”, lockable, painted to match existing ceilings.

(1) Fire Sprinkler Contractor to coordinate exact locations with Architect & Owner during construction (prior to installation).

2) SECTION 123216 – MANUFACTURED PLASTIC-LAMINATE-FACED CASEWORK

a) Part 1 – General A. 2. Remove Lab. Chemical Resistant Plastic Laminate from the project.

b) Part 2 – Products 2.3 Plastic Laminate Casework A. Design: 1. Reveal overlay should read “*All cabinets reveal overlay except at Science room, provide Flush Inset Doors*”.

c) Part 2 – Products 2.4 LAV: CHEMICAL-RESISTANT PLASTIC LAMINATE CABINET. Omit this section from the project.

3) SECTION 123623.13 – PLASTIC-LAMINATE-CLAD COUNTERTOPS

- a) PART 2 – Products, 2.1 Plastic Laminate Countertops C. 2. Change Color: Architect to select from full range of color options *including premium colors from the brand above* change to read “*exclude premium colors from the brands above*”.
- b) PART 2 – 2.2 LAB: EPOXY RESIN COUNTERTOPS A. 3. Change Integral molded 4” high coved curb backsplash to 4” high applied backsplash.
- c) PART 2 – 2.2 LAB: EPOXY RESIN COUNTERTOPS A. 4. Change ‘Drop-in under-mount sinks’ to ‘drop-in sinks’. Basis of design: Prime Industries PL10 16” x 8” x 7”.

4) DRAWING 4.00 – DEMOLITION FLOOR PLAN

- a) Hall A124, north end adjacent to Teacher Work Room A104 – Omit note that reads ‘DEMOPORTION OF FLOOR SLAB TO ALLOW FOR CAPPING OF WASTE LINE AT MAIN (SEE MECH. DRAWINGS FOR ADDITIONAL INFORMATION)’. Waste line can be capped at the floor slab in new classroom A107.

5) DRAWING SHEET 7.10 – CASEWORK ELEVATIONS

- a) Elevations D & E FACS Peninsulas - furnish and install a subframe and apron as part of the casework installation to support radiused countertop. Reference floor plan sheet 4.40 for locations of radiused countertop.

6) DRAWING SHEET 7.20 – CASEWORK SECTIONS

- a) Detail 10/7.20 – provide and install continuous 2 x solid wood blocking ledger along wall to support epoxy resin countertop.

MECHANICAL ITEMS:

7) DRAWING SHEET 8.20 – FLOOR PLANS & RISERS – DEMOLITION – PLUMBING

- a) CLASSROOM UNDERFLOOR PLAN – DEMOLITION – PLUMBING
 - i) 2” waste piping serving sink to be capped at floor. No capping of waste piping in corridor is required. Refer to attached drawing sheet R8.20, 1 of 1, dated 2-15-18.

8) DRAWING SHEET 8.30 – FLOOR PLANS & RISERS – PLUMBING

- a) CLASSROOM UNDERFLOOR PLAN – PLUMBING
 - i) 2” waste piping serving sink to be capped at floor. No capping of waste piping in corridor is required. Refer to attached drawing sheet R8.20, 1 of 1, dated 2-15-18.

ELECTRICAL ITEMS: (NA)

GENERAL APPROVALS:

The following material or equipment furnished by the manufacturer's listed, may be substituted as equivalent providing that each item, material, and piece of equipment conforms to the design and requirement of the specifications.

<u>SECTION</u>	<u>ITEM</u>	<u>MANUFACTURER</u>
123216	CASEWORK	ZOMER'S CABINETS PICKET TRAIL CUSTOM CABINETRY
096723	RESINOUS FLOORING EPOXY	TNEMIC STRATASHIELD

END OF ADDENDUM

SECTION 083113 - ACCESS DOORS AND FRAMES

PART 1 - GENERAL

1.1 RELATED DOCUMENTS

- A. Drawings and general provisions of the Contract, including General and Supplementary Conditions and Division 01 Specification Sections, apply to this Section.

1.2 SUMMARY

- A. Section Includes:
 - 1. Access doors and frames for walls and ceilings.

1.3 ACTION SUBMITTALS

- A. Product Data: For each type of product.
 - 1. Include construction details, materials, individual components and profiles, and finishes.
- B. Shop Drawings:
 - 1. Include plans, elevations, sections, details, and attachments to other work.
 - 2. Detail fabrication and installation of access doors and frames for each type of substrate.
- C. Samples: For each door face material, at least **3 by 5 inches (75 by 125 mm)** in size, in specified finish.
- D. Product Schedule: Provide complete access door and frame schedule, including types, locations, sizes, latching or locking provisions, and other data pertinent to installation.
 - 1. The Contractor shall submit location, size and type of additional proposed access panels to the Architect for review and approval - prior to installation.

PART 2 - PRODUCTS

2.1 ACCESS DOORS AND FRAMES FOR WALLS AND CEILINGS

- A. Manufacturers: Subject to compliance with requirements, **[available manufacturers offering products that may be incorporated into the Work include, but are not limited to, the following]**:
 - 1. Acudor Products, Inc.
 - 2. Babcock-Davis.
 - 3. Bilco Company (The).
 - 4. Broan-Nutone LLC.
 - 5. Cendrex, Inc.
 - 6. Dur-Red Products.
 - 7. Halliday Products.

8. JL Industries, Inc.
 9. Karp Associates, Inc.
 10. Maxam Metal Products Limited.
 11. Metropolitan Door Industries.
 12. MIFAB, Inc.
 13. Milcor; Commercial Products Group of Hart & Cooley, Inc.
 14. Nystrom, Inc.
 15. U.S.F. Fabrication.
 16. William Bros. Corporation of America (The).
- B. Source Limitations: Obtain each type of access door and frame from single source from single manufacturer.
- C. **[Typical]** Flush Access Doors with Exposed Flanges:
1. Assembly Description: Fabricate door to fit flush to frame. Provide manufacturer's standard-width exposed flange, proportional to door size.
 2. Locations: **[Wall][Ceiling]**.
 3. Door Size: **[24-inch x 24-inch]** unless indicated otherwise.
 4. Uncoated Steel Sheet for Door: **[Nominal 0.060 inch (1.52 mm), 16 gage]**.
 - a. Finish: **[Factory prime]**.
 5. Frame Material: **[Same material and thickness as door]**.
 6. Hinges: **[Manufacturer's standard]**.
 7. Hardware: **[Latch w/ lock]**.
 8. Application: Provide access panels fabricated from uncoated steel sheet unless indicated otherwise; factory-primed.
- D. **[Wet-Location]** Flush Access Doors with Exposed Flanges:
1. Assembly Description: Fabricate door to fit flush to frame. Provide manufacturer's standard-width exposed flange, proportional to door size.
 2. Locations: **[Wall][Ceiling]**.
 3. Door Size: **[24-inch x 24-inch]** unless indicated otherwise.
 4. Metallic-Coated Steel Sheet for Door: **[Nominal 0.064 inch (1.63 mm), 16 gage]**.
 - a. Finish: **[Factory prime]**.
 5. Frame Material: **[Same material and thickness as door]**.
 6. Hinges: **[Manufacturer's standard]**.
 7. Hardware: **[Latch w/ lock]**.
 8. Application: Provide access panels fabricated from **[metallic-coated]** steel sheet at wet locations, including in locker rooms and restrooms; factory-primed.
- E. Hardware:
1. At Non-Fire-Rated Access Panels:
 - a. Latch: **[Cam latch]** operated **[by flush key]**.
 - 1) Lock: **[Cylinder]**.

2.2 MATERIALS

- A. Steel Plates, Shapes, and Bars: ASTM A 36/A 36M.
- B. Steel Sheet: Uncoated or electrolytic zinc coated, ASTM A 879/A 879M, with cold-rolled steel sheet substrate complying with ASTM A 1008/A 1008M, Commercial Steel (CS), exposed.
- C. Metallic-Coated Steel Sheet: ASTM A 653/A 653M, Commercial Steel (CS), Type B; with minimum G60 (Z180) or A60 (ZF180) metallic coating.
- D. Frame Anchors: Same type as door face.
- E. Inserts, Bolts, and Anchor Fasteners: Hot-dip galvanized steel according to ASTM A 153/A 153M or ASTM F 2329.

2.3 FABRICATION

- A. General: Provide access door and frame assemblies manufactured as integral units ready for installation.
- B. Metal Surfaces: For metal surfaces exposed to view in the completed Work, provide materials with smooth, flat surfaces without blemishes. Do not use materials with exposed pitting, seam marks, roller marks, rolled trade names, or roughness.
- C. Doors and Frames: Grind exposed welds smooth and flush with adjacent surfaces. Furnish attachment devices and fasteners of type required to secure access doors to types of supports indicated.
 - 1. Provide mounting holes in frames for attachment of units to metal or wood framing.
 - 2. Provide mounting holes in frame for attachment of masonry anchors.
- D. Latching Mechanisms: Furnish number required to hold doors in flush, smooth plane when closed.
 - 1. For cylinder locks, furnish two keys per lock and key all locks alike.

2.4 FINISHES

- A. Comply with NAAMM's "Metal Finishes Manual for Architectural and Metal Products" for recommendations for applying and designating finishes.
- B. Protect mechanical finishes on exposed surfaces from damage by applying a strippable, temporary protective covering before shipping.
- C. Appearance of Finished Work: Noticeable variations in same piece are not acceptable. Variations in appearance of adjoining components are acceptable if they are within the range of approved Samples and are assembled or installed to minimize contrast.
- D. Steel and Metallic-Coated-Steel Finishes:
 - 1. Factory Prime: Apply manufacturer's standard, fast-curing, lead- and chromate-free, universal primer immediately after surface preparation and pretreatment.

PART 3 - EXECUTION

3.1 EXAMINATION

- A. Examine substrates for compliance with requirements for installation tolerances and other conditions affecting performance of the Work.
- B. Proceed with installation only after unsatisfactory conditions have been corrected.

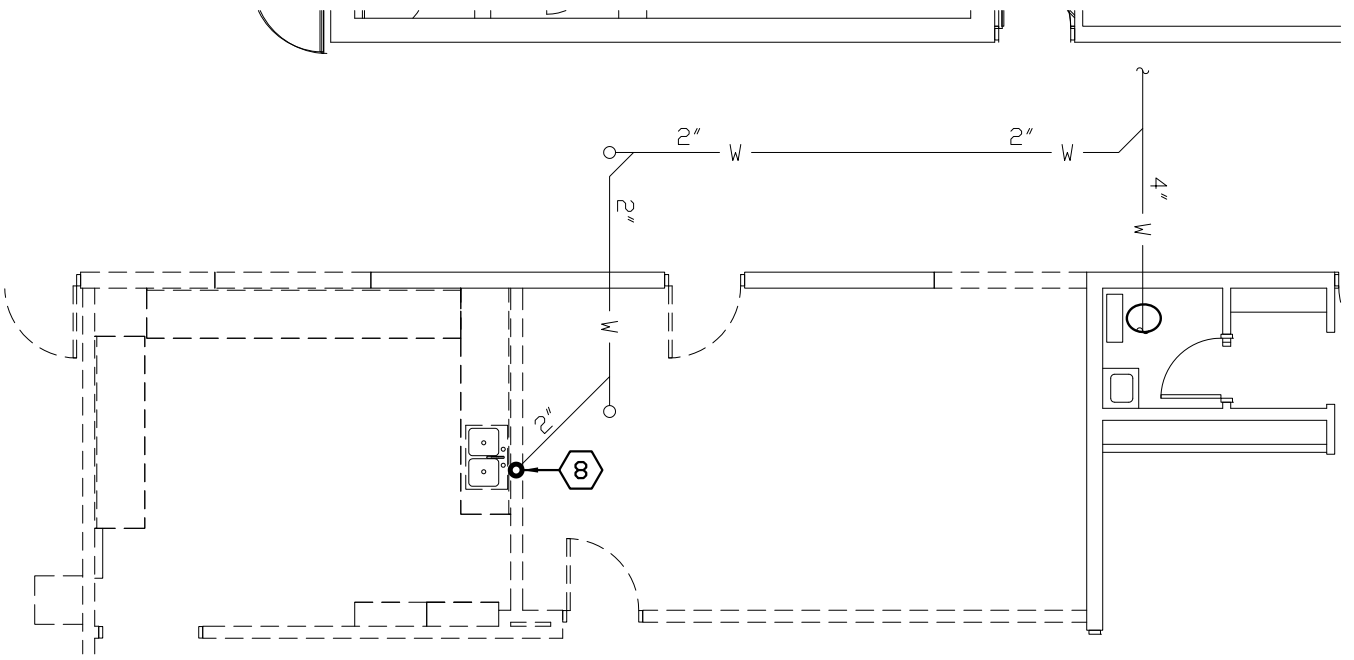
3.2 INSTALLATION

- A. General: Access panels shall be installed where indicated on drawings.
 - 1. The Contractor shall submit location, size and type of additional proposed access panels to the Architect for review and approval - prior to installation
- B. Comply with manufacturer's written instructions for installing access doors and frames.
- C. Install doors flush with adjacent finish surfaces or recessed to receive finish material.

3.3 ADJUSTING

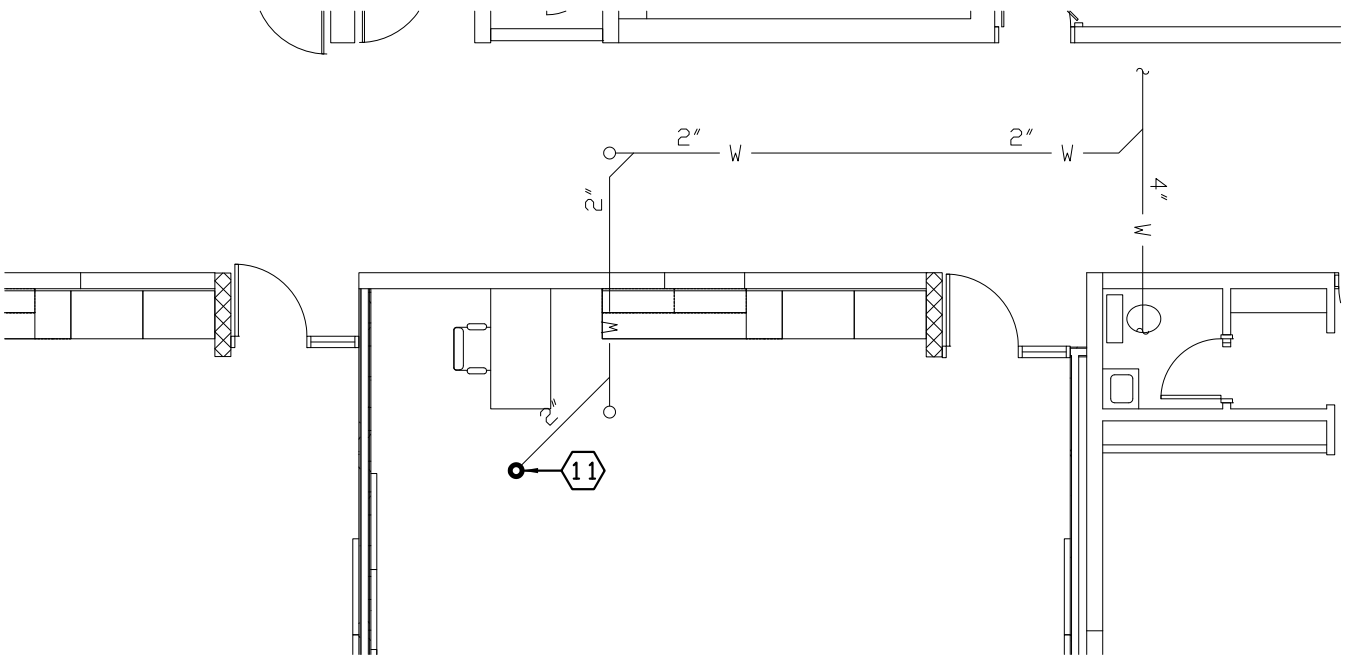
- A. Adjust doors and hardware, after installation, for proper operation.
- B. Remove and replace doors and frames that are warped, bowed, or otherwise damaged.

END OF SECTION 083113



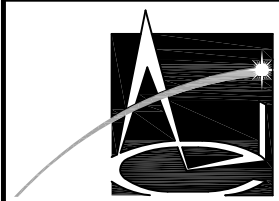

**CLASSROOM UNDERFLOOR PLAN -
DEMOLITION - PLUMBING**

SCALE 0 4 8 12 16




**CLASSROOM UNDERFLOOR PLAN -
PLUMBING**

SCALE 0 4 8 12 16



**Associated
Consulting
Engineering,
Incorporated**

PROJECT

BRANDON VALLEY HIGH SCHOOL
CLASSROOM REMODEL
BRANDON, SD

PROJECT NO.

117126

DATE

2-15-18

DRAWN BY

DWM

SHEET

R8. 20

R8. 30

1 OF 1