

Addendum No. 1
April 8, 2019

Project: **Student Services Phased Renovations – Phase I**
University Student Union
South Dakota State University
Brookings, South Dakota
Project No: 1025.2817.18

Architect: Architecture Incorporated

Letting: Wednesday, May 1, 2019
3:00 P.M.
Office of the State Engineer, Joe Foss Building, 523 East Capitol, Pierre, South Dakota

Scope of this Addendum:

To all bidders and all others to whom drawings and specifications have been issued by Architecture Incorporated, this Addendum forms a part of the Contract Documents. Acknowledge receipt of this addendum by listing its number and date in the bidder's Form of Proposal. Failure to do so may subject bidder to disqualification. This addendum modifies the drawings and specifications as follows:

GENERAL ITEMS:

- 1) GENERAL ITEMS
 - a) Due to forecast weather conditions at the pre-bid meeting location, the pre-bid meeting date and time has been moved to **April 17, 2019 at 3:00 PM**. Note also the meeting location has been changed. Those attending the pre-bid are to meet at the Information Desk of the University Student Union.
- 2) SPECIFICATION SECTION 011000 – SUMMARY
 - a) Part 1.5.D – delete the second sentence of this paragraph.
 - b) Part 1.5.E – Clarification – the date of Substantial Completion for this project shall be October 31, 2019.
- 3) SPECIFICATION SECTION 101419 – DIMENSIONAL LETTER SIGNAGE
 - a) See Specification Section 101419 attached to the end of this addendum. This section is included for the cast aluminum letters identified at Detail P on Drawing Sheet 7.10.
- 4) SPECIFICATION SECTION 123661 – SIMULATED STONE COUNTERTOPS
 - a) See Specification Section 123661 attached to the end of this addendum. This section is included for the solid surface material identified at Details 7, 8, 14 and 15 on Drawing Sheet 7.20.

5) DRAWING SHEET 4.11 – FLOOR PLANS - PARTIAL SECOND FLOOR

- a) Reference Floor Plan - Demolition - Second Floor:
 - i) At hall outside Cottonwood Room 264, remove existing carpet and adhesive between demolished pair of doors and new pair of doors 299B.
- b) Reference Floor Plan - Partial Second Floor:
 - i) Change pair of doors 271D to a single 3'-0" x 7'-0" door. Door to be right hand reverse swing and be centered on the east wall of Storage 271D.
 - ii) Clarification – built-in seating outside west wall of Office 271C was omitted from this plan. Refer to Supplemental Drawing SD-1 attached to the end of this addendum for plan of this seating.
 - iii) Clarification – countertop at east wall of Study Area 271N was omitted from this plan. Refer to Detail M on Drawing Sheet 7.10 for information on this countertop.
 - iv) At existing floor boxes noted to be removed, fill conduit penetrations at floor with grout.

6) DRAWING SHEET 4.21 – FINISH PLAN - PARTIAL SECOND FLOOR

- a) Refer to Supplemental Drawing SD-1 attached to the end of this addendum for modifications to paint designations and the configuration of the built-in step seating at the north end of Crazy Horse Lounge 299.
- b) Refer to the Second Floor Room Finish Schedule:
 - i) Add Recep. / Work 271A – finishes to be as follows:
 - (1) Floor Finish – CPT-4.
 - (2) Base Finish – WB-1.
 - (3) Wall Finish – PNT-1, 2, 3, 4 / WD-2.
 - (4) Ceiling Finish – ACT-1 / WD-2.
 - ii) Store 271B – Provide ACT-1 ceiling finish in lieu of PNT-1.
 - iii) Storage 271D – Wall finish to be Exist / PNT-1. Existing brick wall does not get paint.
 - iv) Event Service Store 275:
 - (1) Change Base Finish to Exist / RB-1. Provide RB-1 at new walls only.
 - (2) Change Wall Finish to Exist / PNT. Provide paint to match existing at new walls only.
 - v) Add Cart Storage 275A (see Drawing Sheet 4.11 for location of room tag) – finishes to be as follows:
 - (1) Floor Finish – Sealed Concrete.
 - (2) Base Finish – RB-1.
 - (3) Wall Finish – PNT-1.
 - (4) Ceiling Finish – Existing / ACT. See room finish note 'b'.
 - vi) Add Hallway 299B – finishes to be as follows:
 - (1) Floor Finish – Existing.
 - (2) Base Finish – Existing / RB-1 at new wall.
 - (3) Wall Finish – Existing / PNT / WP-1. Paint shall be provided at new walls and above protective wall panels at south side of hall. Paint shall match existing paint in this area.
 - (4) Ceiling Finish – Existing.
 - vii) Hallway 299G:
 - (1) Change Floor Finish to Exist / Sealed Concrete. Provide concrete sealer at previously carpeted floor between west wall of Room 275 and new pair of doors 299B.
 - (2) Change Base Finish to Exist / RB-1. Provide RB-1 at new and existing walls from Door 299B to the southeast corner of the elevator at the north wall and from Door 299B to the northwest corner of Cart Storage 275A at the south wall.
 - (3) Change Wall Finish to PNT-1.

- 7) DRAWING SHEET 4.30 – DOOR SCHEDULE AND DETAILS
 - a) Refer to the Door Schedule:
 - i) Change door 271D to be a single 3'-0" x 7'-0" type A door in lieu of a pair. Provide hardware group #6 in lieu of #9.
- 8) DRAWING SHEET 6.10 – RCP - PARTIAL SECOND FLOOR & DETAILS
 - a) Refer to RCP – Partial Second Floor:
 - i) Clarification at Recep. / Work 271A - soffit to be WD-2 as indicated in Detail 4/6.10.
 - ii) Clarification at Hallway 299G – existing ceiling is 2x4 acoustical ceiling tile.
- 9) DRAWING SHEET 7.10 – CASEWORK \ INTERIOR ELEVATIONS
 - a) Refer to Supplemental Drawing SD-1 attached to the end of this addendum for modifications to detail N/7.10.
- 10) DRAWING SHEET 7.20 – CASEWORK SECTIONS
 - a) Refer to Supplemental Drawing SD-2 attached to the end of this addendum for modifications to detail 16/7.20 and the addition of detail 20/7.20.

MECHANICAL ITEMS:

NA

ELECTRICAL ITEMS:

- 1) DRAWING SHEET 9.20 – SECOND FLOOR PLANS - ELECTRICAL
 - a) Reference Second Floor Plan - Lighting:
 - i) At the east wall of Waiting 271, omit the dimmer switch at the north wall of the existing chase at the south end of the room. At the north end of this wall, relocate the dimmer switch from the west face of the wall to the north side of the projected wall adjacent door/frame into Conference 271K.

GENERAL APPROVALS:

The following material or equipment furnished by the manufacturers listed, may be substituted as equivalent providing that each item, material, and piece of equipment conforms to the design and requirement of the specifications.

<u>SECTION</u>	<u>ITEM</u>	<u>MANUFACTURER</u>
----------------	-------------	---------------------

NA

END OF ADDENDUM

SECTION 101419 - DIMENSIONAL LETTER SIGNAGE

PART 1 - GENERAL

1.1 RELATED DOCUMENTS

- A. Drawings and general provisions of the Contract, including General and Supplementary Conditions and Division 01 Specification Sections, apply to this Section.

1.2 SUMMARY

- A. Section Includes:
 - 1. Cast dimensional characters.

1.3 ACTION SUBMITTALS

- A. Product Data: For each type of product.
- B. Shop Drawings: For dimensional letter signs.
 - 1. Include fabrication and installation details and attachments to other work.
 - 2. Show sign mounting heights, locations of supplementary supports to be provided by others, and accessories.
 - 3. Show message list, typestyles, graphic elements, and layout for each sign at least half size.
- C. Samples for Verification: For each type of sign, include the following Samples to verify color selected:
 - 1. Dimensional Characters: Full-size Samples of each type of dimensional character required. Show character style, material, finish, and method of attachment.

1.4 INFORMATIONAL SUBMITTALS

- A. Qualification Data: For Installer.

1.5 CLOSEOUT SUBMITTALS

- A. Maintenance Data: For signs to include in maintenance manuals.

1.6 QUALITY ASSURANCE

- A. Installer Qualifications: An entity that employs installers and supervisors who are trained and approved by manufacturer.

1.7 PROJECT CONDITIONS

- A. Field Measurements: Where sizes of signs are determined by dimensions of surfaces on which they are installed, verify dimensions by field measurement before fabrication and indicate measurements on Shop Drawings.

1.8 COORDINATION

- A. For signs supported by or anchored to permanent construction, advise installers of anchorage devices about specific requirements for placement of anchorage devices and similar items to be used for attaching signs.
 - 1. For signs supported by or anchored to permanent construction, furnish templates for installation of anchorage devices.

PART 2 - PRODUCTS

2.1 DIMENSIONAL CHARACTERS

- A. Cast Characters: Characters with uniform faces, sharp corners, and precisely formed lines and profiles, and as follows:
 - 1. **Basis-of-Design Product:** Subject to compliance with requirements, provide flat-faced Gemini cast metal letters or comparable product by one of the following:
 - a. American Graphics, Inc.
 - b. A.R.K. Ramos.
 - c. ASI Sign Systems, Inc.
 - d. Gemini Incorporated.
 - e. Metal Arts; Div. of L&J Mfg.
 - f. Signature Signs, Inc.
 - 2. Character Material: Cast aluminum.
 - 3. Character Height: 12".
 - 4. Finishes:
 - a. Integral Aluminum Finish: Clear anodized.
 - 5. Mounting: Concealed studs.
 - 6. Typeface: Times New Roman.

2.2 DIMENSIONAL CHARACTER MATERIALS

- A. Aluminum Castings: ASTM B 26/B 26M, alloy and temper recommended by sign manufacturer for casting process used and for type of use and finish indicated.
- B. Aluminum Sheet and Plate: **ASTM B 209 (ASTM B 209M)**, alloy and temper recommended by aluminum producer and finisher for type of use and finish indicated.
- C. Aluminum Extrusions: **ASTM B 221 (ASTM B 221M)**, alloy and temper recommended by aluminum producer and finisher for type of use and finish indicated.

2.3 ACCESSORIES

- A. Fasteners and Anchors: Manufacturer's standard as required for secure anchorage of signage, noncorrosive and compatible with each material joined, and complying with the following:
 - 1. Use concealed fasteners and anchors unless indicated to be exposed.
 - 2. Exposed Metal-Fastener Components, General:
 - a. Fabricated from same basic metal and finish of fastened metal unless otherwise indicated.
 - 3. Sign Mounting Fasteners:
 - a. Concealed Studs: Concealed (blind), threaded studs welded or brazed to back of sign material, screwed into back of sign assembly, or screwed into tapped lugs cast integrally into back of cast sign material, unless otherwise indicated.

2.4 FABRICATION

- A. General: Provide manufacturer's standard sign assemblies according to requirements indicated.
 - 1. Preassemble signs and assemblies in the shop to greatest extent possible. Disassemble signs and assemblies only as necessary for shipping and handling limitations. Clearly mark units for reassembly and installation; apply markings in locations concealed from view after final assembly.
 - 2. Mill joints to a tight, hairline fit. Form assemblies and joints exposed to weather to resist water penetration and retention.
 - 3. Comply with AWS for recommended practices in welding and brazing. Provide welds and brazes behind finished surfaces without distorting or discoloring exposed side. Clean exposed welded and brazed connections of flux, and dress exposed and contact surfaces.
 - 4. Conceal connections if possible; otherwise, locate connections where they are inconspicuous.
 - 5. Internally brace signs for stability and for securing fasteners.
 - 6. Provide rebates, lugs, and brackets necessary to assemble components and to attach to existing work. Drill and tap for required fasteners. Use concealed fasteners where possible; use exposed fasteners that match sign finish.
 - 7. Castings: Fabricate castings free of warp, cracks, blowholes, pits, scale, sand holes, and other defects that impair appearance or strength. Grind, wire brush, sandblast, and buff

castings to remove seams, gate marks, casting flash, and other casting marks before finishing.

2.5 GENERAL FINISH REQUIREMENTS

- A. Protect mechanical finishes on exposed surfaces from damage by applying a strippable, temporary protective covering before shipping.
- B. Appearance of Finished Work: Noticeable variations in same piece are not acceptable. Variations in appearance of adjoining components are acceptable if they are within the range of approved Samples and are assembled or installed to minimize contrast.
- C. Organic, Anodic, and Chemically Produced Finishes: Apply to formed metal after fabrication but before applying contrasting polished finishes on raised features unless otherwise indicated.

2.6 ALUMINUM FINISHES

- A. Clear Anodic Finish: AAMA 611, Class I, 0.018 mm or thicker.

PART 3 - EXECUTION

3.1 EXAMINATION

- A. Examine substrates, areas, and conditions, with Installer present, for compliance with requirements for installation tolerances and other conditions affecting performance of signage work.
- B. Verify that sign-support surfaces are within tolerances to accommodate signs without gaps or irregularities between backs of signs and support surfaces unless otherwise indicated.
- C. Proceed with installation only after unsatisfactory conditions have been corrected.

3.2 INSTALLATION

- A. General: Install signs using mounting methods indicated and according to manufacturer's written instructions.
 - 1. Install signs level, plumb, true to line, and at locations and heights indicated, with sign surfaces free of distortion and other defects in appearance.
 - 2. Before installation, verify that sign surfaces are clean and free of materials or debris that would impair installation.
- B. Mounting Methods:
 - 1. Concealed Studs: Using a template, drill holes in substrate aligning with studs on back of sign. Remove loose debris from hole and substrate surface.

- a. Thin or Hollow Surfaces: Place sign in position and flush to surface, install washers and nuts on studs projecting through opposite side of surface, and tighten.

3.3 ADJUSTING AND CLEANING

- A. Remove and replace damaged or deformed characters and signs that do not comply with specified requirements. Replace characters with damaged or deteriorated finishes or components that cannot be successfully repaired by finish touchup or similar minor repair procedures.
- B. Remove temporary protective coverings and strippable films as signs are installed.
- C. On completion of installation, clean exposed surfaces of signs according to manufacturer's written instructions, and touch up minor nicks and abrasions in finish. Maintain signs in a clean condition during construction and protect from damage until acceptance by Owner.

END OF SECTION 101419

SECTION 123661 - SIMULATED STONE COUNTERTOPS

PART 1 - GENERAL

1.1 RELATED DOCUMENTS

- A. Drawings and general provisions of the Contract, including General and Supplementary Conditions and Division 01 Specification Sections, apply to this Section.

1.2 SUMMARY

- A. Section Includes:
 - 1. Solid-surface-material.

1.3 ACTION SUBMITTALS

- A. Product Data: For countertop materials.
- B. Use same product designations indicated on architectural drawings for shop drawings.
- C. Samples for Verification: For the following products:
 - 1. Countertop material: Manufacturer's standard size samples.

1.4 CLOSEOUT SUBMITTALS

- A. Maintenance Data: For each type of solid surface to include in maintenance manuals.

1.5 PROJECT CONDITIONS

- A. Field Measurements: Verify dimensions of countertops by field measurements after base cabinets are installed but before countertop fabrication is complete.

1.6 COORDINATION

- A. Coordinate locations of utilities that will penetrate countertops or backsplashes.

PART 2 - PRODUCTS

2.1 SOLID-SURFACE-MATERIAL COUNTERTOPS: SS

1. **Manufacturers:** Provide products by one of the following manufacturers:

- a. FORMICA
- b. WILSONART
- c. CORIAN
- d. LG
- e. HANNEX
- f. HI-MAC
- g. AVONITE

B. Approved products are listed below for **SS-1**:

a. Basis-of-Design Product:

- 1) Manufacturer: **Corian**
- 2) Color: **Corian Lava Rock or as selected by architect full color range from price group 6 or less.**
- 3) Application: **Countertops and reception transition top.**

C. Configuration: Provide countertops with the following front and backsplash style unless otherwise indicated:

1. Front: Straight, slightly eased at top.

D. **Countertops:** **3/4-inch-(19-mm-)** thick, solid surface material with front edge built up with same material.

E. Fabrication: Fabricate tops in one piece with shop-applied edges unless otherwise indicated. Comply with solid-surface-material manufacturer's written instructions for adhesives, sealers, fabrication, and finishing.

2.2 COUNTERTOP MATERIALS

A. Particleboard: ANSI A208.1, **Grade M-2.**

B. Plywood: Exterior grade softwood plywood complying with DOC PS 1, Grade C-C Plugged, touch sanded.

C. Solid Surface Material: Homogeneous solid sheets of filled plastic resin complying with ANSI SS1.

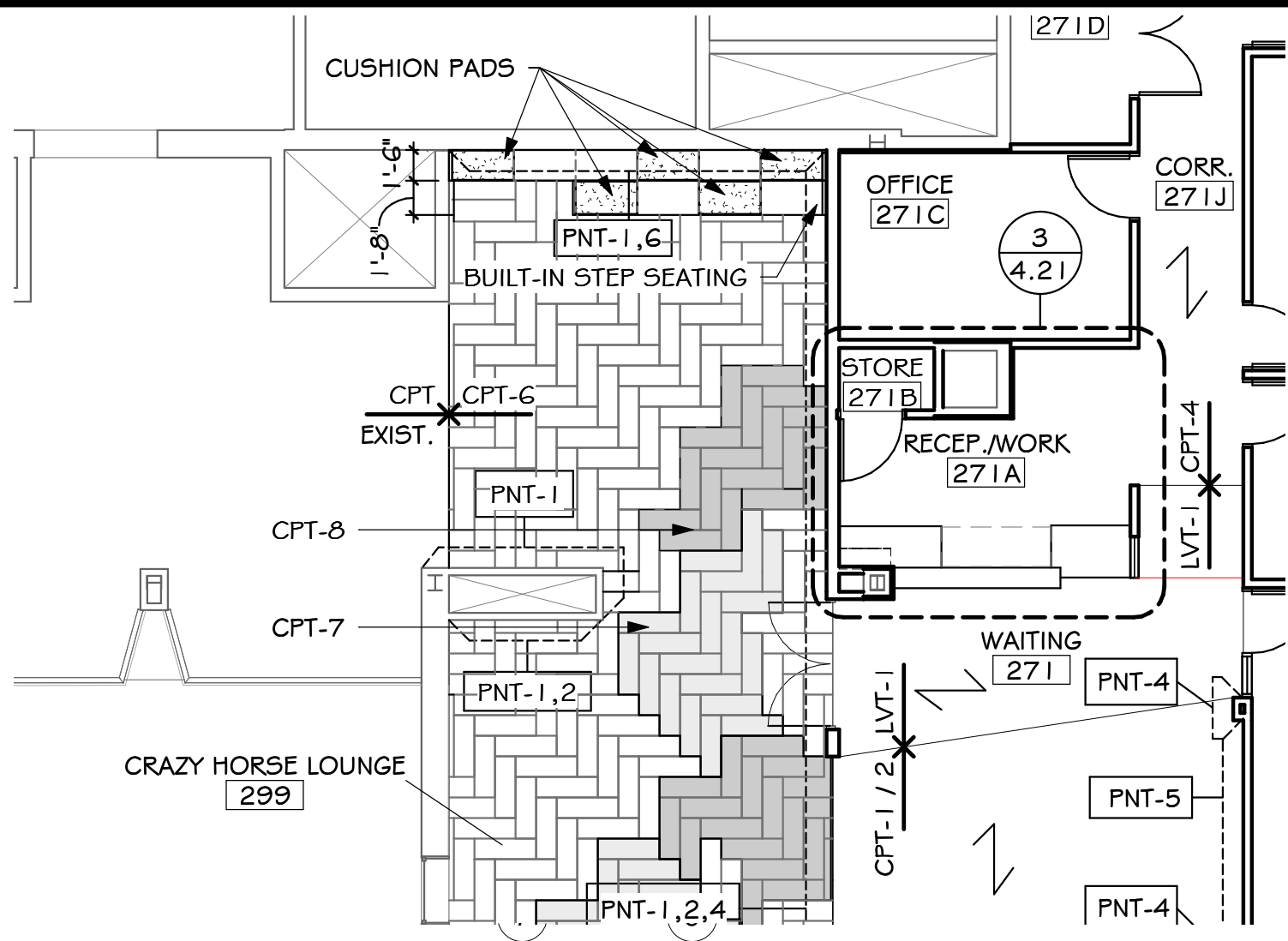
1. Type: Provide Standard Type unless Special Purpose Type is indicated.
 2. **Integral Sink Bowls:** Comply with ISSFA-2 and ANSI Z124.3, Type 5 or Type 6, without a precoated finish.
- D. Quartz Agglomerate: Solid sheets consisting of quartz aggregates bound together with a matrix of filled plastic resin and complying with the "Physical Characteristics of Materials" Article of ANSI SS1.

PART 3 - EXECUTION

3.1 INSTALLATION

- A. Install countertops level to a tolerance of **1/8 inch in 8 feet (3 mm in 2.4 m)**.
- B. Finish exposed surfaces smooth and polish to low sheen.
- C. Radius corners and edges.
- D. Fasten countertops by screwing through corner blocks of base units into underside of countertop. Pre-drill holes for screws as recommended by manufacturer. Align adjacent surfaces and, using adhesive in color to match countertop, form seams to comply with manufacturer's written instructions. Carefully dress joints smooth, remove surface scratches, and clean entire surface.
 1. Seal edges of cutouts in particleboard subtops by saturating with varnish.
 2. Use clear caulk by sink areas.

END OF SECTION 123661

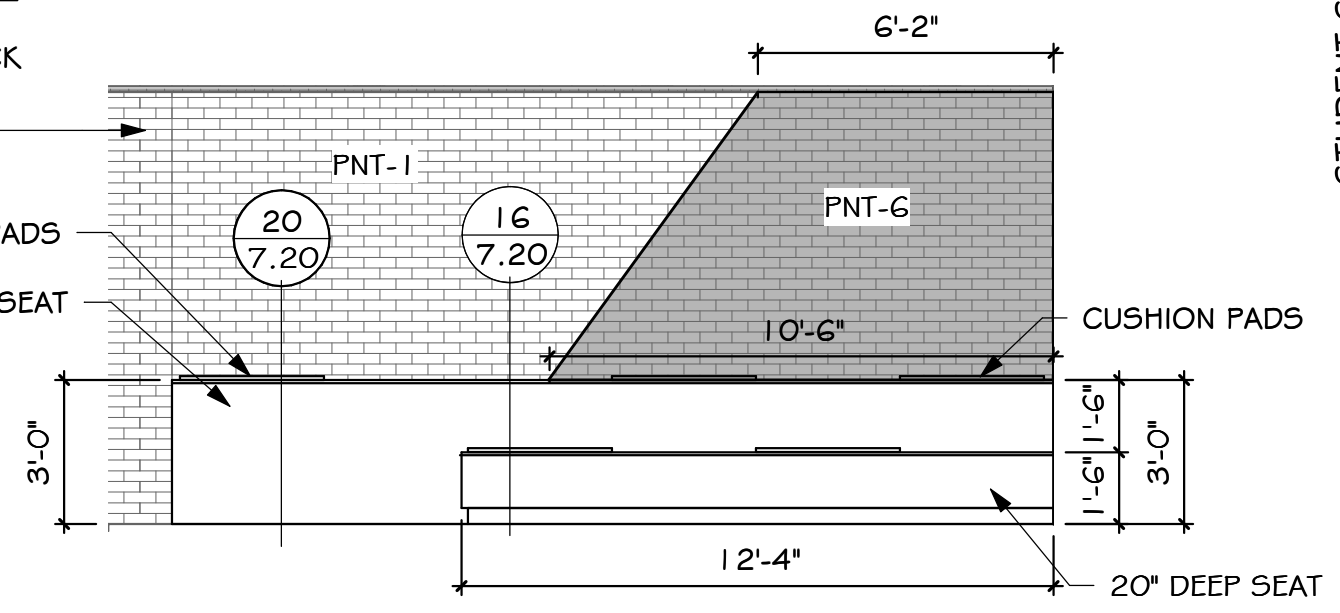


FINISH PLAN - PARTIAL SECOND FLOOR

SCALE: 1/8" = 1'-0"

EXISTING BRICK
REMAIN
UNPAINTED

CUSHION PADS
18" DEEP SEAT



STEP SEATING

SCALE: 1/4" = 1'-0"

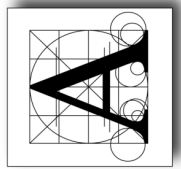
STUDENT SERVICES PHASED RENOVATIONS
PHASE I

Project number 1025.2817.18
date APRIL 9, 2019
drawn ALJ
checked
revision

Architecture Incorporated
sioux falls and rapid city, south dakota

DRAWING

SD-1



TREADS 1 INCH SOLID WOOD BENCH
TOP STAINED TO MATCH PLAM-2

RISERS 1 3/16 INCH SOLID WOOD
STAINED TO MATCH PLAM-2

ELECTRICAL: SEE ELECTRICAL PLANS

TREADS 1 INCH SOLID WOOD BENCH
TOP STAINED TO MATCH PLAM-2

RISERS 1 3/16 INCH SOLID
WOOD STAINED TO MATCH
PLAM-2

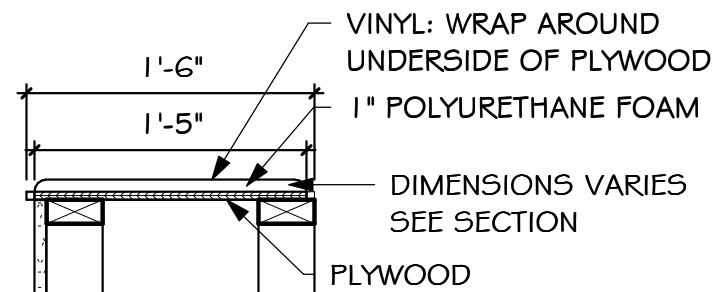
ELECTRICAL: SEE
ELECTRICAL PLANS

4" RESILIENT BASE

1" FIXED PAD: SEE PLAN FOR LOCATIONS

FIXED PAD: SEE PLAN FOR LOCATIONS

FIXED CUSHION PAD DETAIL FOR STEP SEATING



1" FIXED PAD: SEE PLAN FOR LOCATIONS

TREADS 1 INCH SOLID WOOD BENCH
TOP STAINED TO MATCH PLAM-2

RISERS 1 3/16 INCH SOLID WOOD
STAINED TO MATCH PLAM-2

ELECTRICAL: SEE ELECTRICAL PLANS

RESILIENT BASE

16
7.20

DOUBLE STEP SEATING

SCALE: 1" = 1'-0"

20
7.20

STEP SEATING

SCALE: 1" = 1'-0"

STUDENT SERVICES PHASED RENOVATIONS

Project PHASE I

number 1025.2817.18

date APRIL 9, 2019

drawn ALJ

checked

Checker

revision

Architecture Incorporated

sioux falls and rapid city, south dakota

DRAWING

SD-2

